

Home Features

- SAMSUNG SMART FRIDGE
- UNDERMOUNT CABINET LIGHTING
- KITCHEN ISLANDS WITH BUILT IN SHELVING
- PULL-OUT PANTRIES
- DESK NOOK
- BLACKOUT ROLLER BLINDS
- WALK IN CLOSETS
- SAMSUNG GAS RANGE
- BUILT-IN MICROWAVE
- PARKING STALLS EQUIPPED WITH EV CHARGING FUNCTIONALITY
- PARCEL LOCKERS
- COMMON AMENITIES IN EVERY BUILDING
- AIR CONDITIONING (UPGRADE OPTION)
- EXPANSIVE STORAGE LOCKERS
- PRIVATE YARDS WITH PATIOS (SELECT HOMES)



Sutton West

The Details of *Refinement*

Inspired by modern architecture and design, Park & Maven offers distinguished exterior features including rich brick work, cedar soffits and black exterior lighting to create a unique look.

Park & Maven's urban homes are outfitted with striking cedar plank entry canopies that welcome visitors into distinctive double height lobbies which feature richly stained wood paneled walls, accent lighting, stone flooring, and floor to ceiling glazing in all common areas.

Townhomes at Park & Maven feature hardie panels and boast bold, modern colours. They stand out among the tree lined streets with vibrant red doors and blue exteriors.

The *Maven* House

Enjoy exclusive access to the residents-only Maven House featuring over 12,000 sqft of resort-style amenities right next to your home. Amenities include:

- GAMES ROOM WITH A COZY FIREPLACE
- ON-SITE COMMUNITY DAYCARE
- SPACIOUS TERRACE AND ROOFTOP BBQ DECK PERFECT FOR RELAXED OUTDOOR DINING OR ENTERTAINING
- LOUNGE AND PARTY ROOM FULLY OUTFITTED WITH A CHEF'S KITCHEN
- INDOOR DOG WASH STATION
- CO-WORKING SPACE WITH PRIVATE BOARDROOM AND WORKSTATIONS
- FITNESS CENTER COMPLETE WITH YOGA AREA AND SPIN BIKES
- THEATRE AREA

Exceptional Amenities

Enjoy 15 acres of green space containing walking trails, bike paths, picnic areas and park benches surrounded by hundreds of existing and newly planted trees. Features include:

- PEDESTRIAN AND CYCLIST-FRIENDLY
- SECURE UNDERGROUND PARKING READY FOR EV CHARGING
- SHARED AMENITIES SPACE IN EACH BUILDING INCLUDING A KITCHEN AND LOUNGE SEATING AREA
- ABUNDANT VISITOR PARKING LOCATED THROUGHOUT
- PARCEL LOCKERS FOR ON-SITE PACKAGE DELIVERY
- THREE PLAYGROUNDS TO KEEP CHILDREN ENTERTAINED OUTDOORS
- COMMUNITY GARDEN FOR YOUR GREEN THUMB
- TWO BEAUTIFUL NATURAL PONDS HOME TO DUCKS, TURTLES AND FISH
- RELAXING OUTDOOR GAZEBO
- ONSITE CAR SHARE TO MAKE GETTING AROUND A BREEZE
- BIKE STORAGE IN A SECURED, EASY ACCESS UNDER GROUND FLOOR STORAGE ROOM

Well-Designed Interiors

- OPEN CONCEPT FLOORPLANS MAXIMIZE LIVING SPACE

- CHOOSE FROM TWO SOPHISTICATED DESIGNER COLOUR SCHEMES:

Onyx

Featuring black iron cabinetry, contrasted by light raw Nordic wood accents

Olive

Featuring Knoxville gray cabinetry, complimented by coastal Nordic wood accents

- OVER HEIGHT 9' CEILINGS CREATE GRANDEUR AND FLOW

- CONTEMPORARY FLAT PANEL STYLE CABINERY

- DESK NOOKS FOR WORK FROM HOME CONVENIENCE

- WIDE-PLANK, DURABLE LAMINATE FLOORING THROUGHOUT ACCENTED BY CARPETED BEDROOMS (SELECT HOMES)

- MODERN KITCHEN ISLAND PENDANT LIGHTS

- 5% OPACITY ROLLER BLINDS AND BLACKOUT BLINDS IN THE BEDROOMS FOR ULTIMATE SHADE AND PRIVACY

- FULL SIZE IN-SUITE SAMSUNG FRONT LOADING WASHER AND DRYER

- AMPLE STORAGE AND CLOSET SPACE, WITH SELECT UNITS OUTFITTED WITH WALK-IN CLOSETS

- HIGH PERFORMANCE, DOUBLE-GLAZED, OVERSIZED LOW ENERGY WINDOWS

- COVERED DECKS AND GROUND FLOOR PATIOS EXTEND YOUR LIVING SPACE OUTSIDE

- MATTE BLACK HARDWARE THROUGHOUT

- TOWNHOMES COME EQUIPPED WITH CENTRAL AIR KEEPING YOU COOL IN THE HOT SUMMER MONTHS

- URBAN HOMES SUPPLIED WITH ROUGH-IN FOR AIR CONDITIONING

- STATE-OF-THE-ART WI-FI THERMOSTATS

- LUXURY UNDERMOUNT CABINET LIGHTING

Endless Exteriors

- SPACIOUS OUTDOOR LIVING FOR EVERY HOME
- 55 TOWNHOMES SPRAWLED OVER AN EXPANSIVE SEVEN ACRES WITH LUSH, PRIVATE BACKYARDS AND EXPANSIVE PATIOS
- TOWNHOMES COME EQUIPPED WITH GAS BBQ HOOK-UP ON BALCONIES
- SELECT URBAN HOMES WITH GROUND FLOOR GARDEN SUITES WITH TWO ENTRANCES, PERFECT FOR DOG OWNERS OR THOSE WHO WANT PRIVATE ENTRY
- URBAN HOME PENTHOUSE SUITES WITH LARGE DECK AREAS ON SELECT HOMES
- DURABLE EXTERIOR HARDIE PANEL CEMENT BOARD CLADDING WITH AN INTEGRAL RAIN SCREEN SYSTEM AND BRICK CLADDING
- AMPLE BIKE STORAGE AND LARGE STORAGE LOCKERS FOR ALL YOUR OUTDOOR GEAR
- ACCOMMODATE AN ADDITIONAL VEHICLE WITH THE OPTION TO PURCHASE A SECOND PARKING STALL (SUBJECT TO AVAILABILITY)

Functional Kitchens

- FULL HEIGHT PANTRIES AND WOODGRAIN DETAILED OPEN SHELVING DESIGNED WITH THE CHEF IN MIND
- LARGE KITCHEN ISLANDS TO COMFORTABLY SEAT FOUR WITH BUILT IN SHELVING FOR EXTRA STORAGE
- QUARTZ COUNTERTOPS THROUGHOUT WITH EASED EDGE DETAIL
- LARGE SCALE POLISHED, PORCELAIN KITCHEN BACKSPLASH TILE IN YOUR CHOICE OF FINISH
- PULL-OUT WASTE AND RECYCLING BINS TO KEEP THINGS ORGANIZED UNDER THE KITCHEN SINK
- UNDERMOUNT STAINLESS-STEEL KITCHEN SINKS TO ACCOMMODATE ALL YOUR POTS AND PANS
- SINGLE HANDLE PULL-DOWN SPRAY KITCHEN FAUCETS
- PREMIUM FULL-SIZE STAINLESS STEEL APPLIANCE PACKAGE INCLUDES:
 - Wi-fi enabled Samsung 18 cu.ft. counter-depth French door refrigerator
 - Samsung Energy Star certified dishwasher with digital water leakage sensor
 - Samsung gas range with Air Fry and convection modes Integrated one-piece hood fan equipped with built-in LED lighting
 - Built-in Panasonic 1.6 cu.ft. microwave with blue LED ring dial

Spa-Inspired Bathrooms

- DESIGNED WITH FUNCTIONALITY IN MIND
- CUSTOM CABINETRY FOR ALL YOUR TOILETRIES
- DEEP SOAKER TUB AND OVERSIZED SHOWERS WITH FRAMELESS GLASS DOORS
- LARGE SCALE MATTE, PORCELAIN BATHROOM TILE IN YOUR CHOICE OF FINISH

The Jayen Promise

Built-in assurance for you and your home.

With over 20+ years in construction and home building experience, Jayen Properties is committed to providing the ultimate Customer Care experience with our dedicated Customer Service team.

All our homes are covered by the WBI 2-5-10 Home Warranty:

- 2 YEARS FOR MATERIAL AND LABOUR
- 5 YEARS FOR BUILDING ENVELOPE
- 10 YEARS FOR STRUCTURAL DEFECTS

park & maven

WILLOWBROOK

Phase 1

CARDINAL & HERON 233 UNITS

- 1 BEDROOM (84 UNITS) 539 - 611 SF
- 1 BEDROOM + DEN (4 UNITS) 565 - 593 SF

- JR. 2 BEDROOM (24 UNITS) 640 - 696 SF
- 2 BEDROOM (121 UNITS) 674 - 804 SF

TOWNHOMES 55 UNITS

- 2 BEDROOM (25 UNITS) 1,186 - 1,214 SF
- 3 BEDROOM (30 UNITS) 1,449 - 1,496 SF

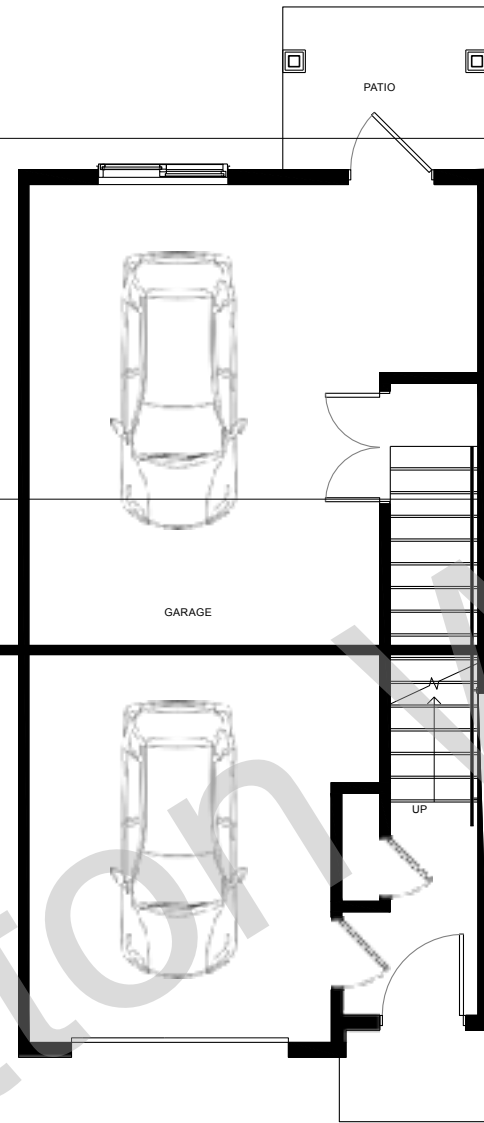


Site Map

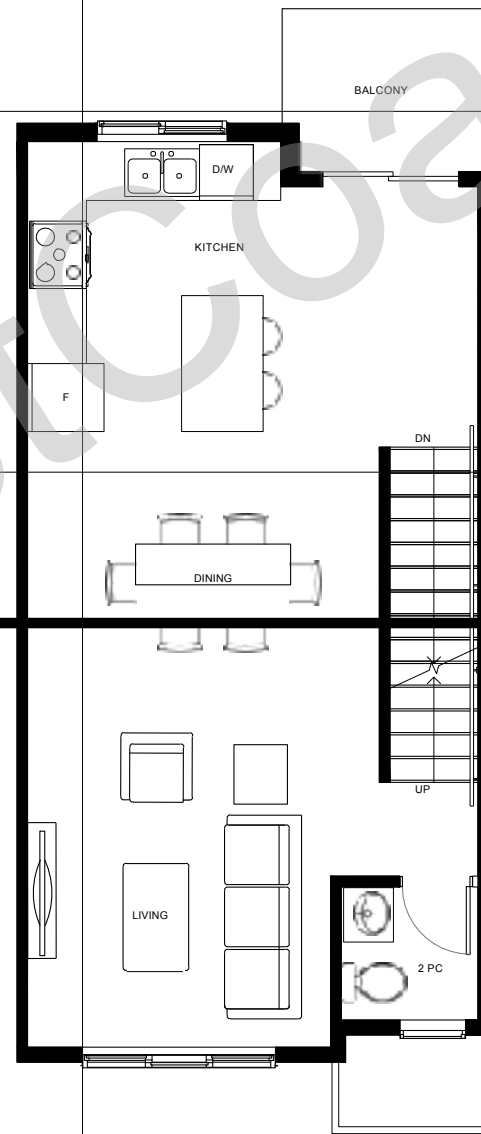


PLAN B

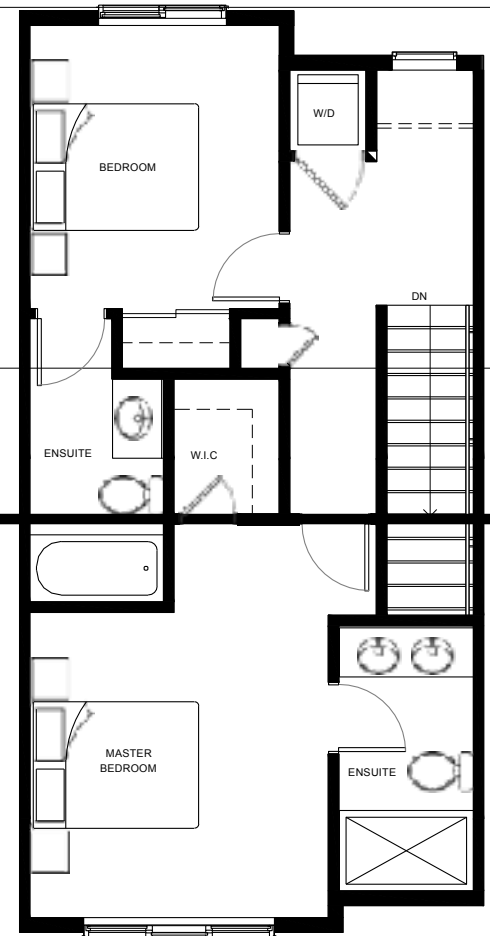
2 BED 2.5 BATH
INTERIOR: 1,186 - 1,214 SF
BACKYARD: 255 - 2,528 SF



FIRST FLOOR



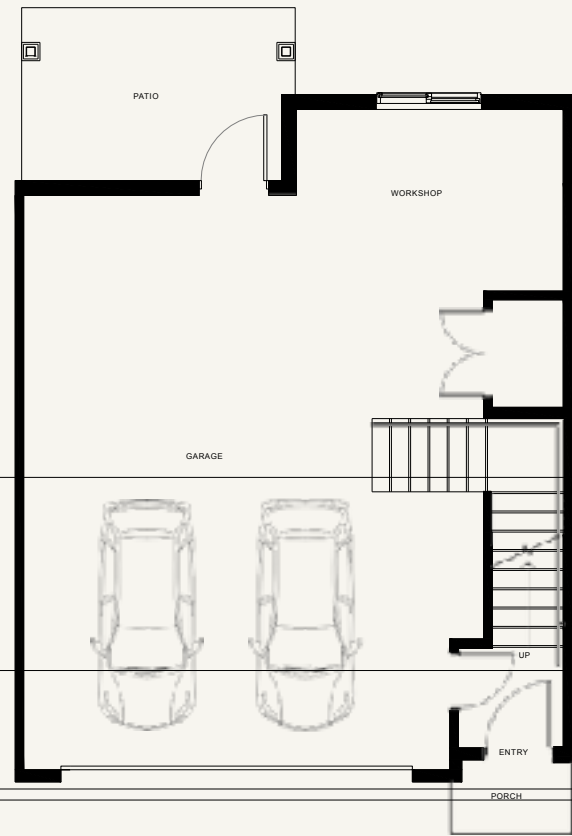
SECOND FLOOR



THIRD FLOOR

PLAN A

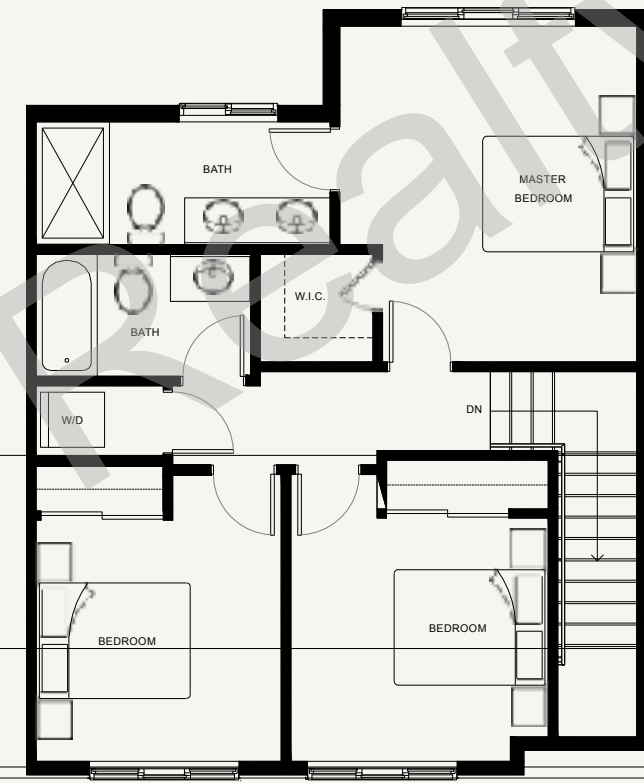
3 BED 2.5 BATH
INTERIOR: 1,459 - 1,496 SF
BACKYARD: 98 - 546 SF



FIRST FLOOR



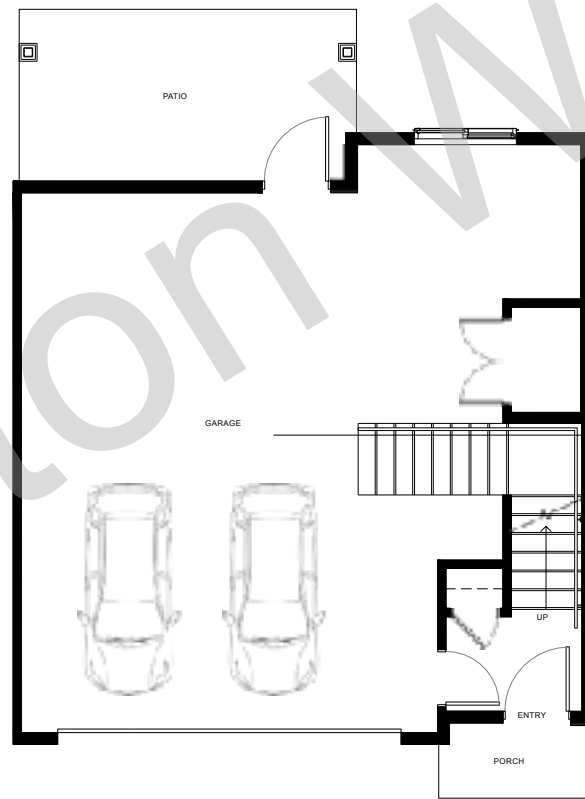
SECOND FLOOR



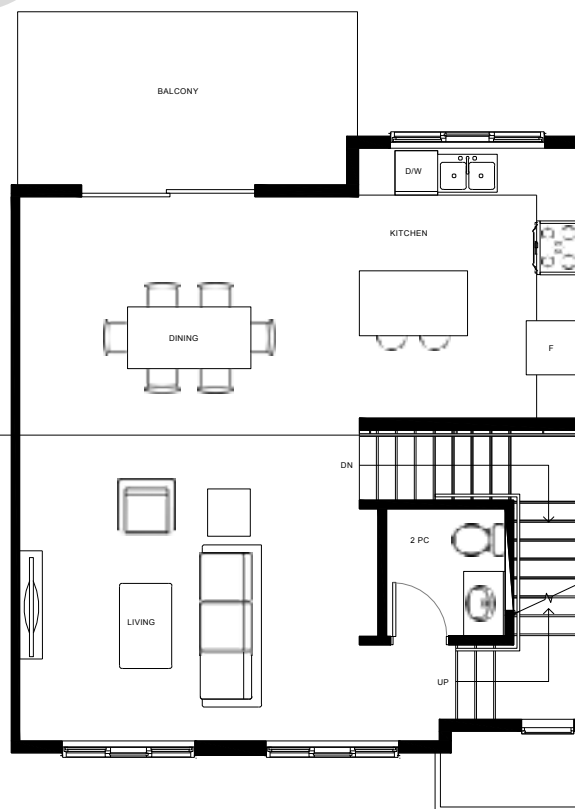
THIRD FLOOR

PLAN C

3 BED 2.5 BATH
INTERIOR: 1,449 - 1,478 SF
BACKYARD: 468 - 1,069 SF



FIRST FLOOR



SECOND FLOOR



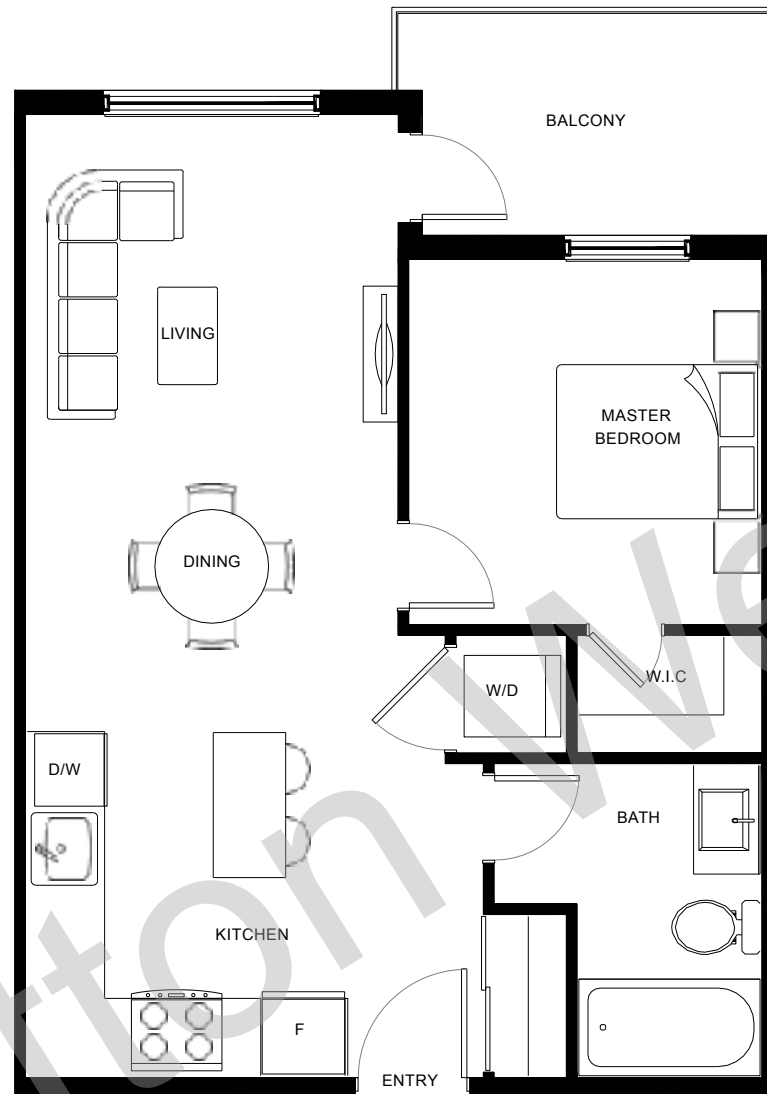
THIRD FLOOR

PLAN A / A5 / A6 / A9 / A10

1 BED 1 BATH
 INTERIOR: 539 - 571 SF
 EXTERIOR: 66 - 198 SF

PLAN A7

1 BED 1 BATH
 INTERIOR: 580 SF
 EXTERIOR: 90 - 187 SF



LEGEND

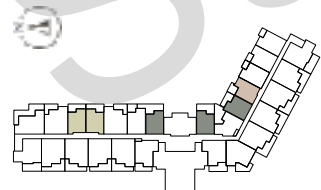
- A
- A5
- A6
- A9
- A10

Cardinal

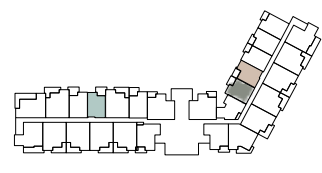
Heron

Cardinal

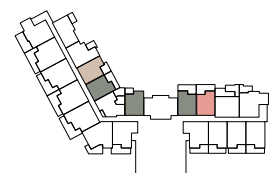
Heron



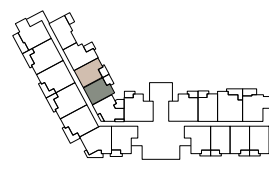
MAIN FLOOR



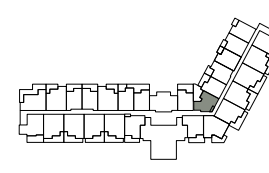
FLOOR 2-4



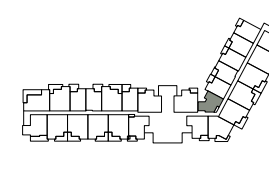
MAIN FLOOR



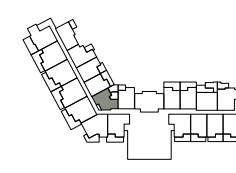
FLOOR 2-4



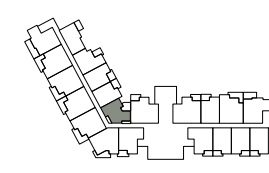
MAIN FLOOR



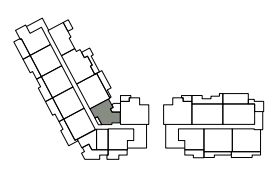
FLOOR 2-4



MAIN FLOOR



FLOOR 2-4



PENTHOUSE

PLAN B / B Corner / B2 / B5 / B7

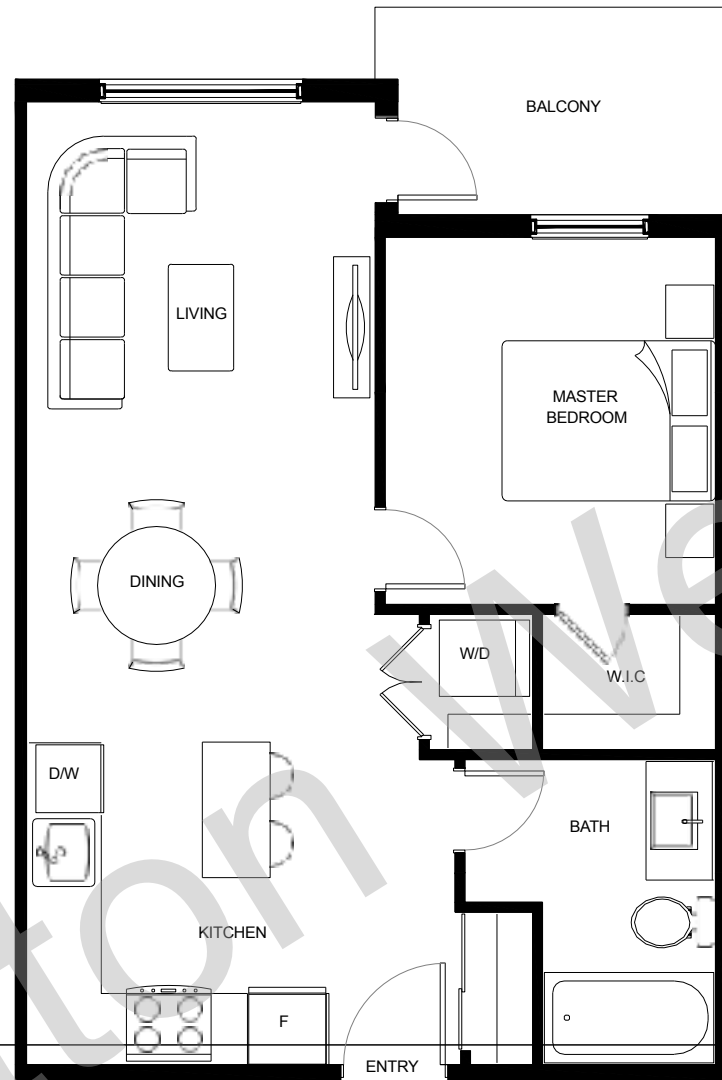
1 BED 1 BATH
INTERIOR: 551 - 586 SF
EXTERIOR: 63 - 152 SF

PLAN B3

1 BED 1 BATH
INTERIOR: 600 SF
EXTERIOR: 75 SF

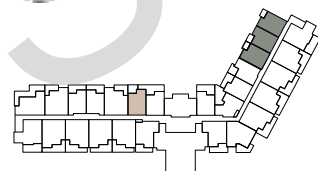
LEGEND

- B
- B CORNER
- B2
- B5
- B7

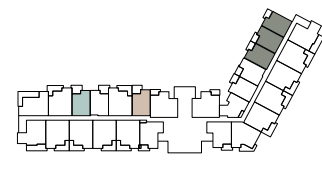


Cardinal

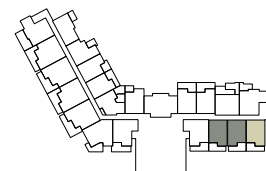
Heron



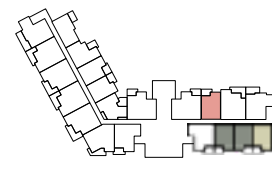
MAIN FLOOR



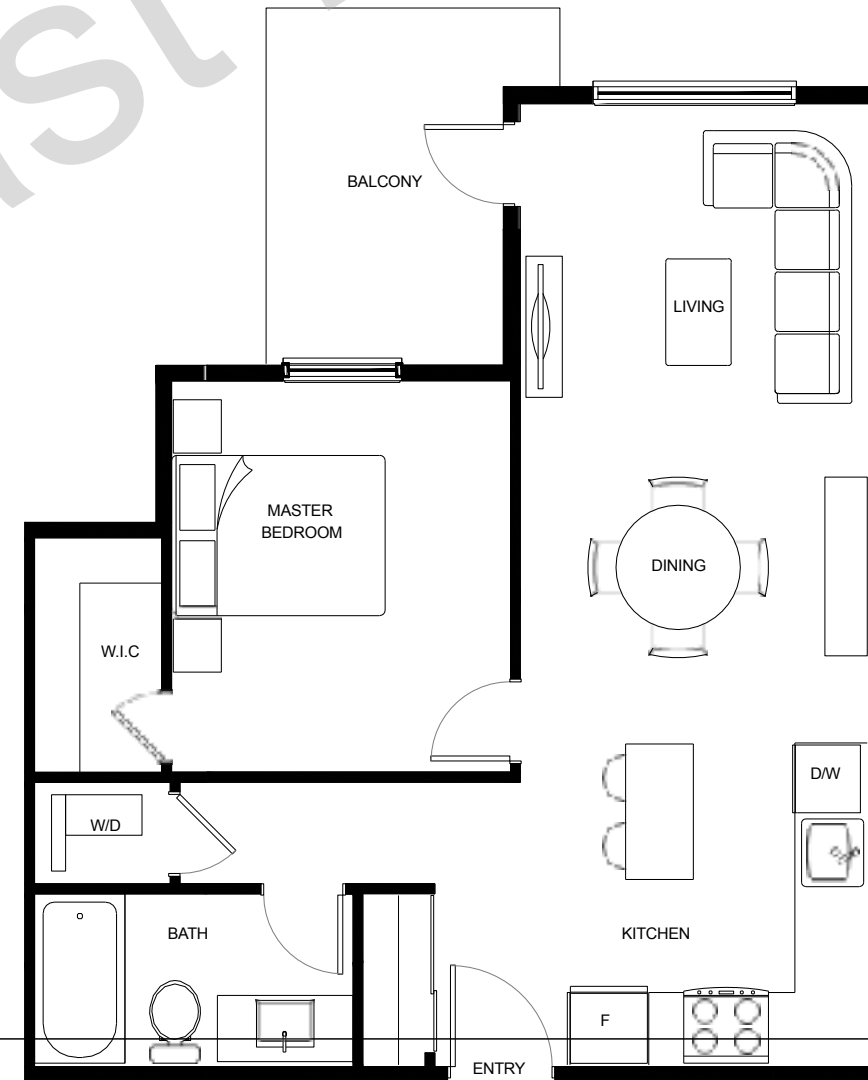
FLOOR 2-4



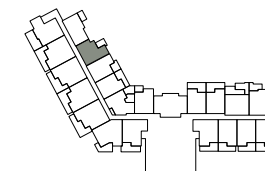
MAIN FLOOR



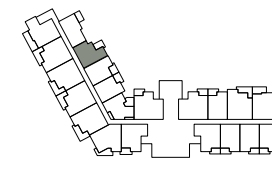
FLOOR 2-4



Heron



MAIN FLOOR



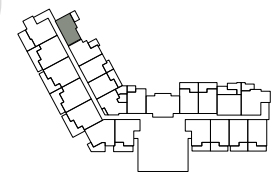
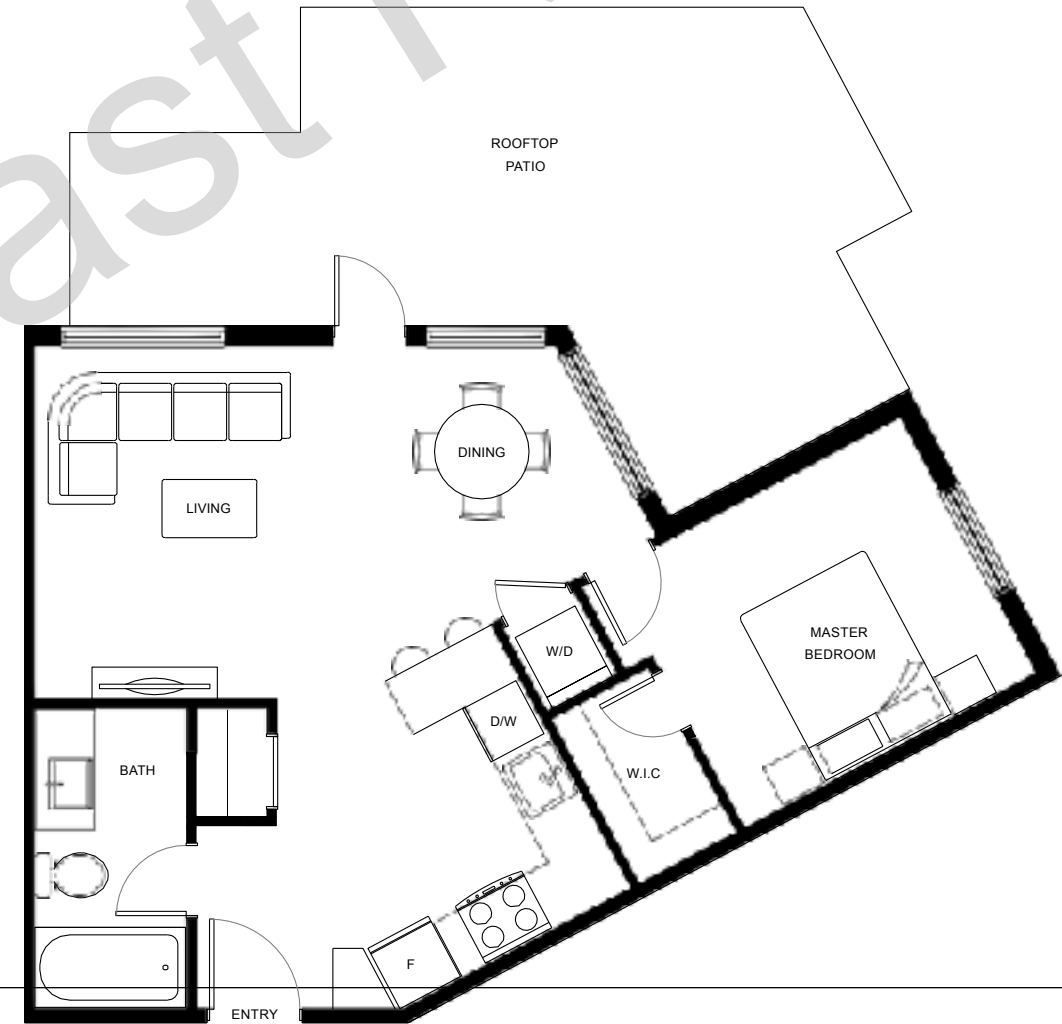
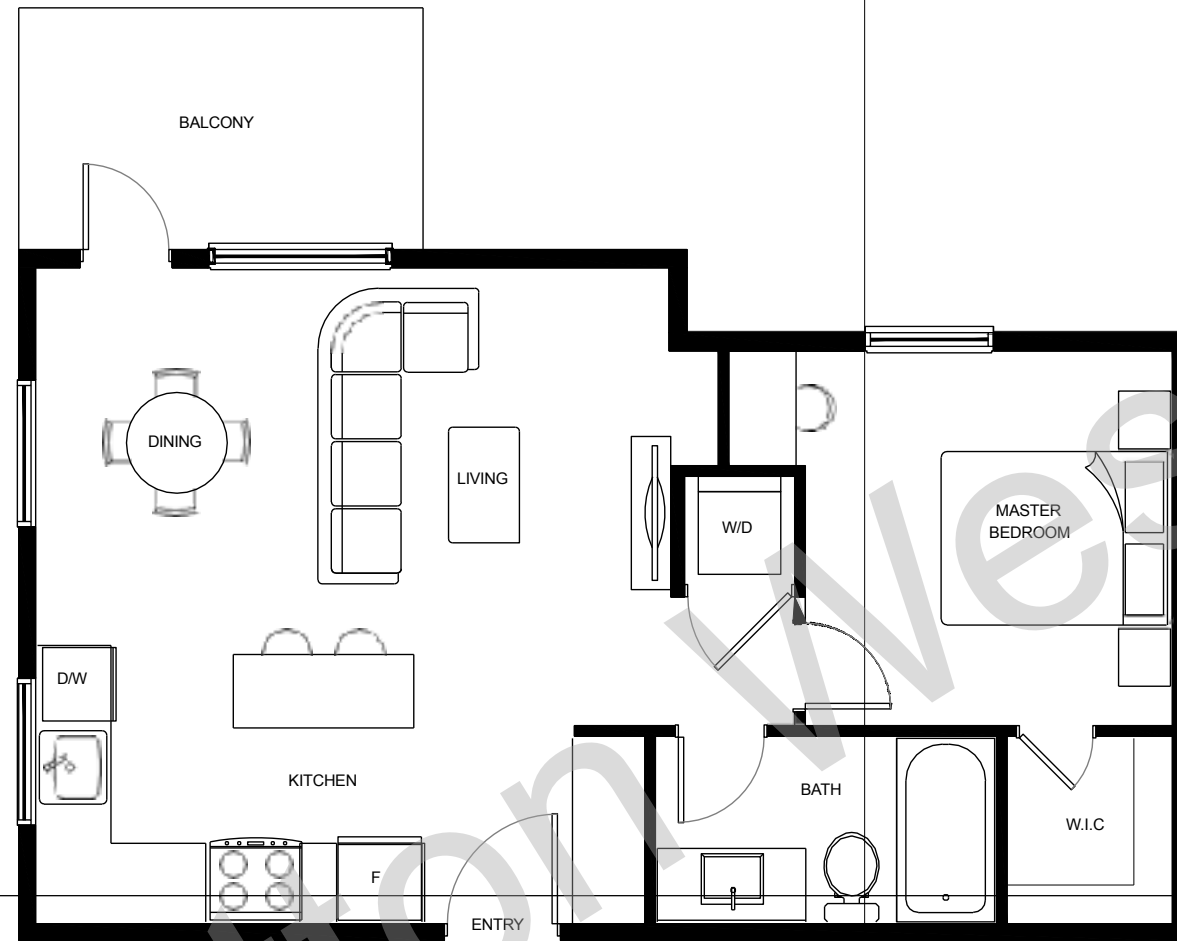
FLOOR 2-4

PLAN B6

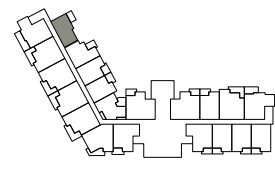
1 BED 1 BATH
INTERIOR: 567 SF
EXTERIOR: 70 SF

PLAN F7

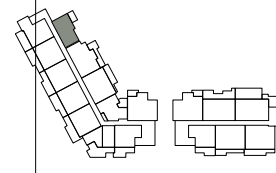
1 BED 1 BATH
INTERIOR: 611 SF
EXTERIOR: 283 - 286 SF



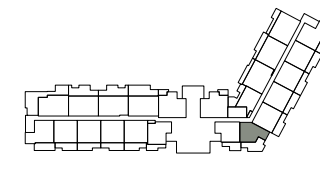
MAIN FLOOR



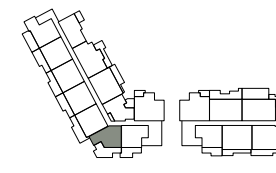
FLOOR 2-4



PENTHOUSE



PENTHOUSE



PENTHOUSE

Heron

Cardinal

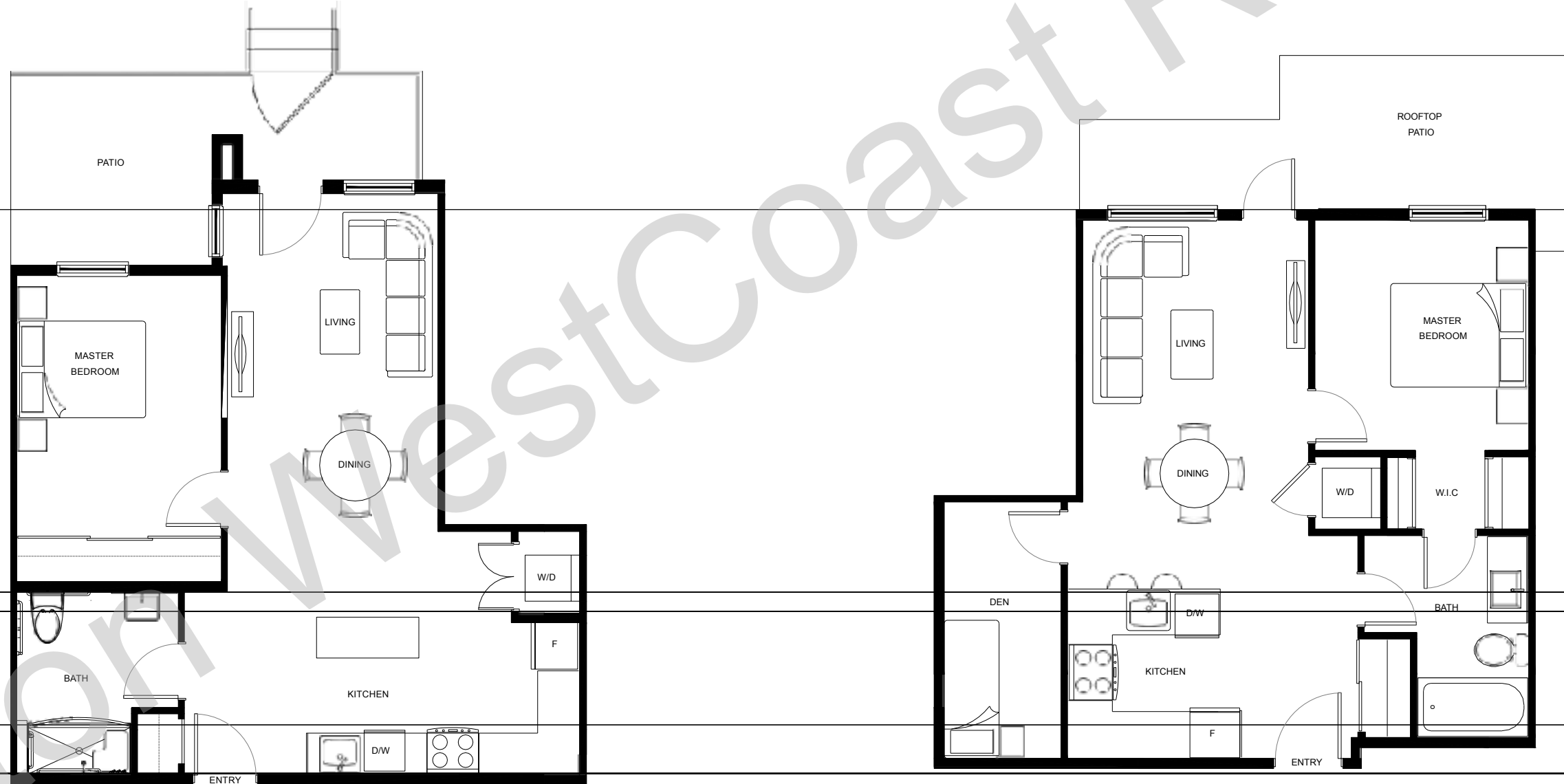
Heron

PLAN E / E1/ E3 Accessible

1 BED 1 BATH
INTERIOR: 640 - 696 SF
EXTERIOR: 137 - 162 SF

PLAN F5

1 BED + DEN 1 BATH
INTERIOR: 593 SF
EXTERIOR: 127 SF



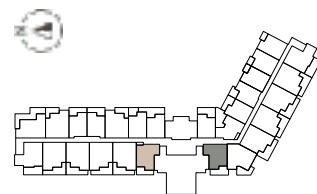
LEGEND

- E ACCESSIBLE
- E1 ACCESSIBLE
- E3 ACCESSIBLE

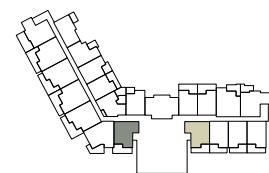
Cardinal

Heron

Cardinal



MAIN FLOOR



MAIN FLOOR



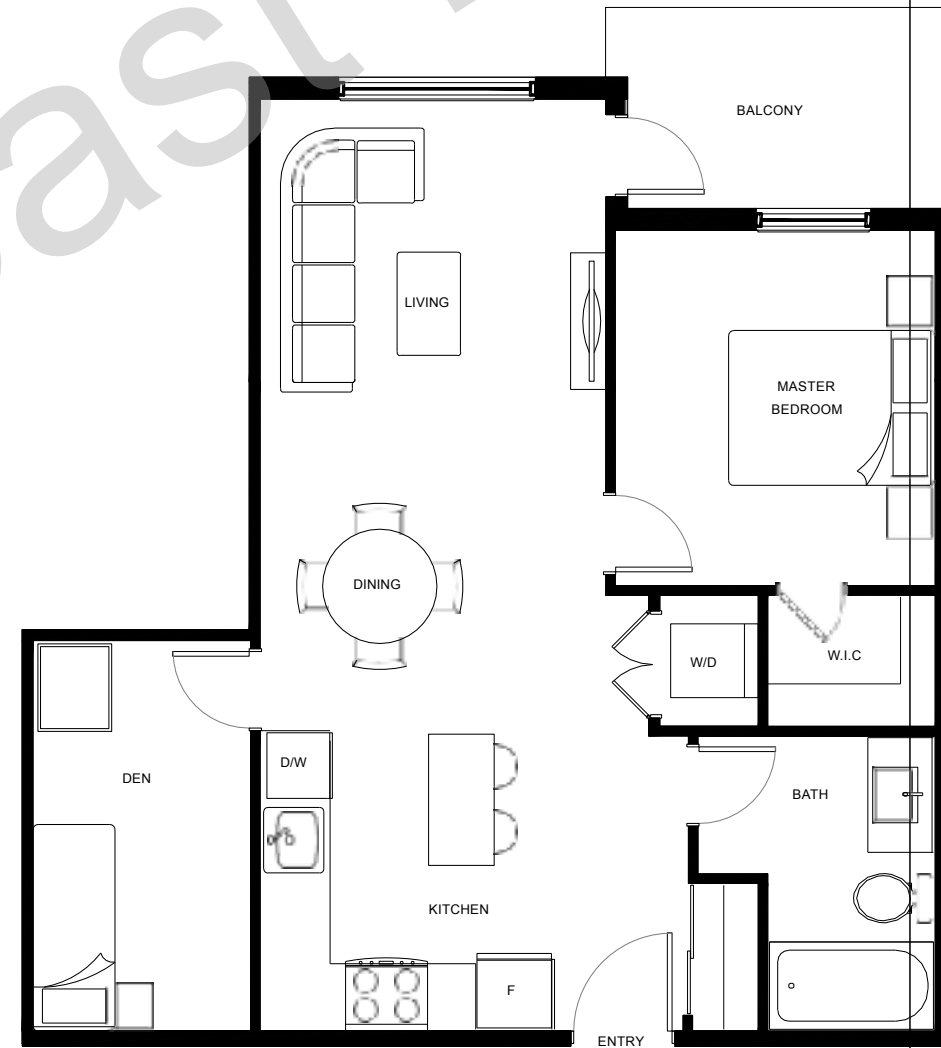
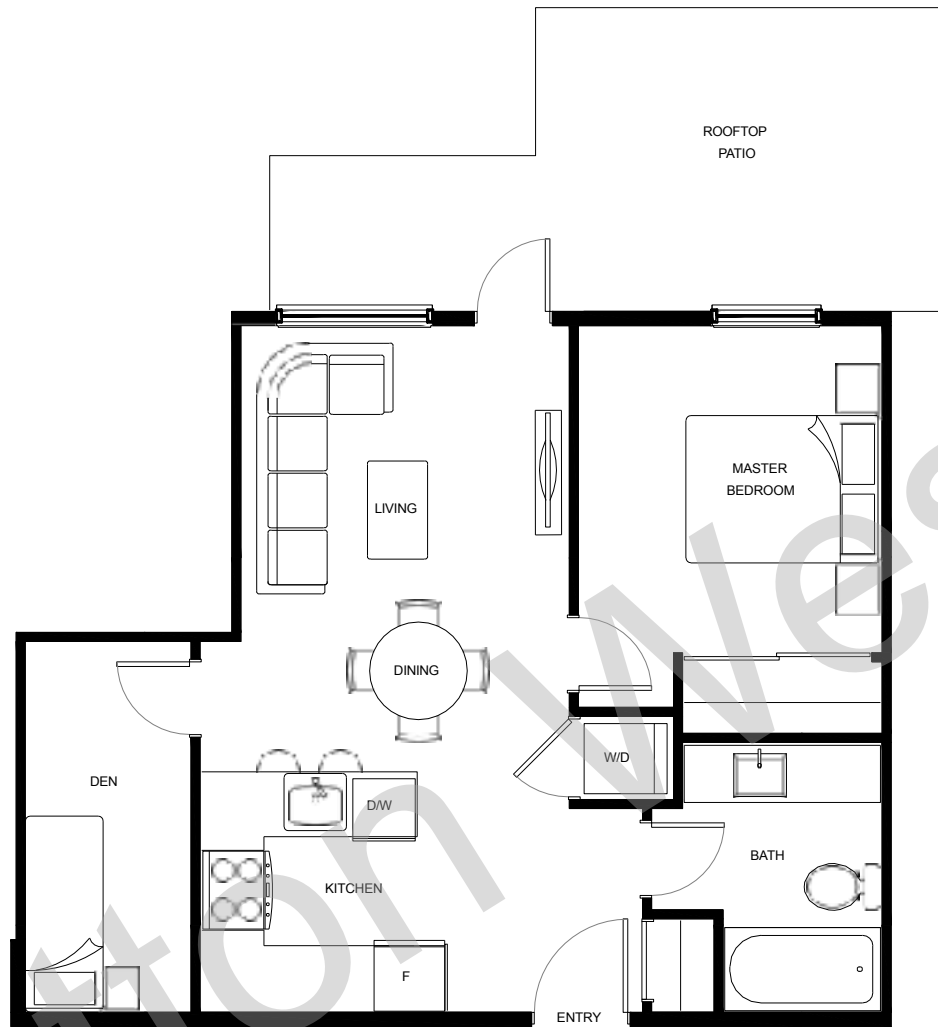
PENTHOUSE

PLAN F6

1 BED + DEN 1 BATH
INTERIOR: 565 SF
EXTERIOR: 170 - 181 SF

PLAN E/E1/E3

JR. 2 BED 1 BATH
INTERIOR: 640 - 696 SF
EXTERIOR: 66 - 77 SF

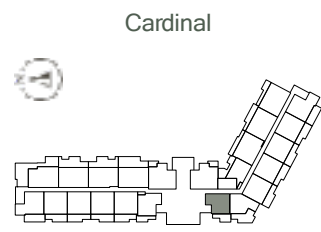


LEGEND

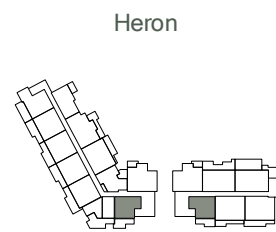
E

E1

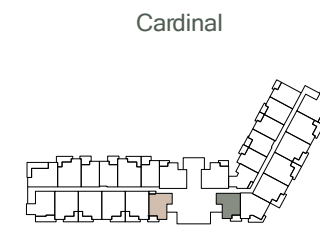
E3



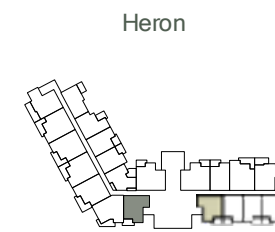
PENTHOUSE



PENTHOUSE



FLOOR 2-4



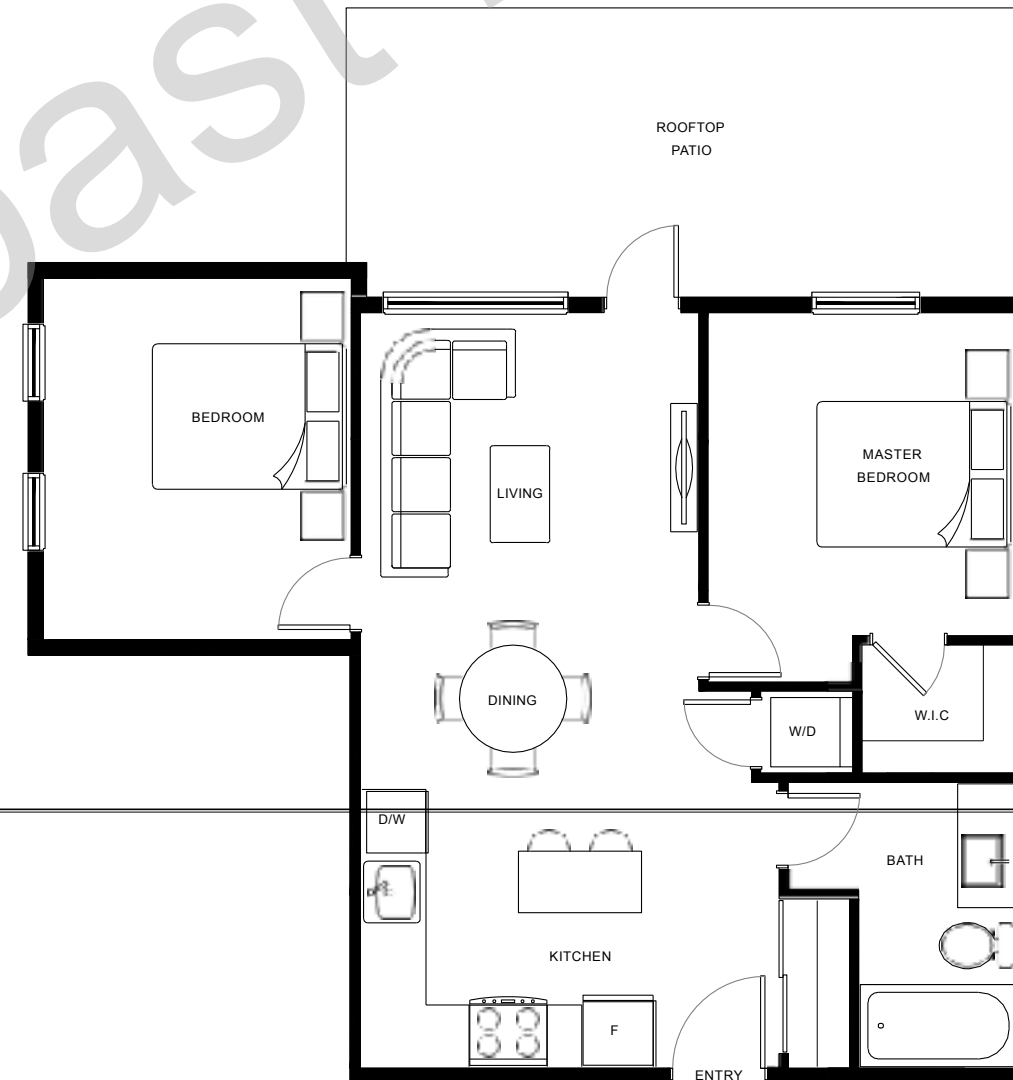
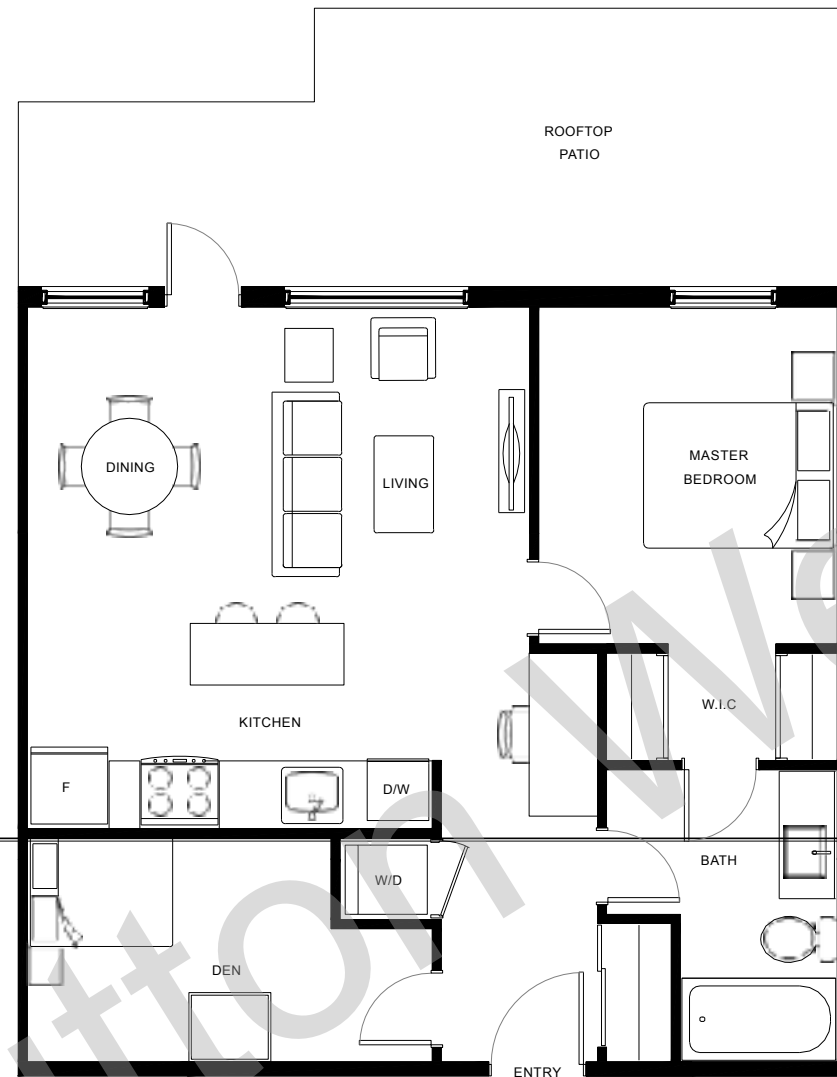
FLOOR 2-4

PLAN **F4**

JR. 2 BED 1 BATH
INTERIOR: 688 SF
EXTERIOR: 205 - 235 SF

PLAN **F3 / F3A**

2 BED 1 BATH
INTERIOR: 674 SF
EXTERIOR: 200 - 207 SF



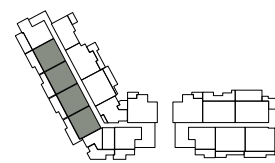
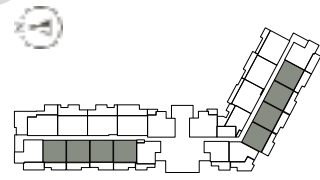
LEGEND

F3

F3A

Cardinal

Heron

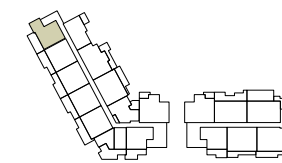
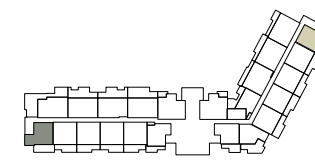


PENTHOUSE

PENTHOUSE

Cardinal

Heron

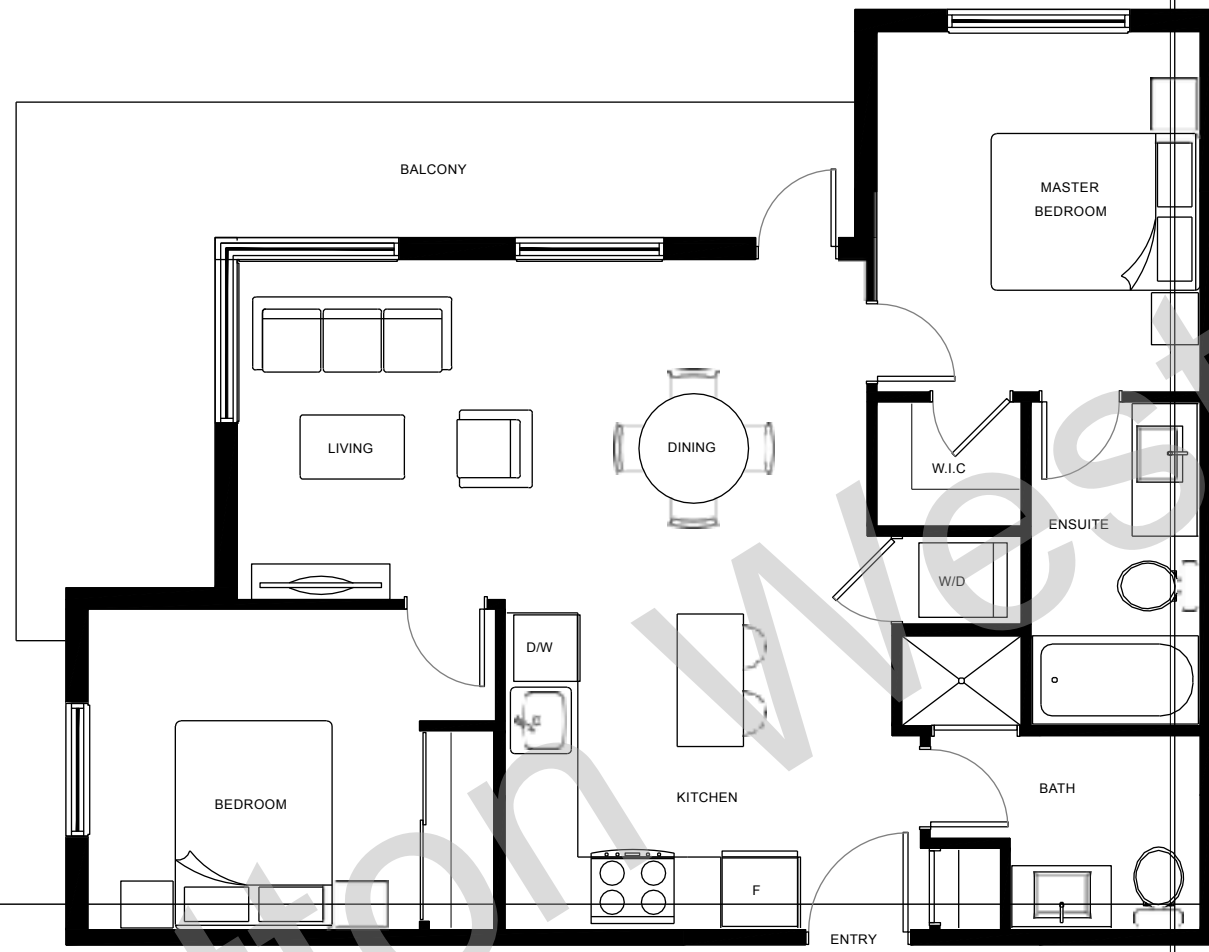


PENTHOUSE

PENTHOUSE

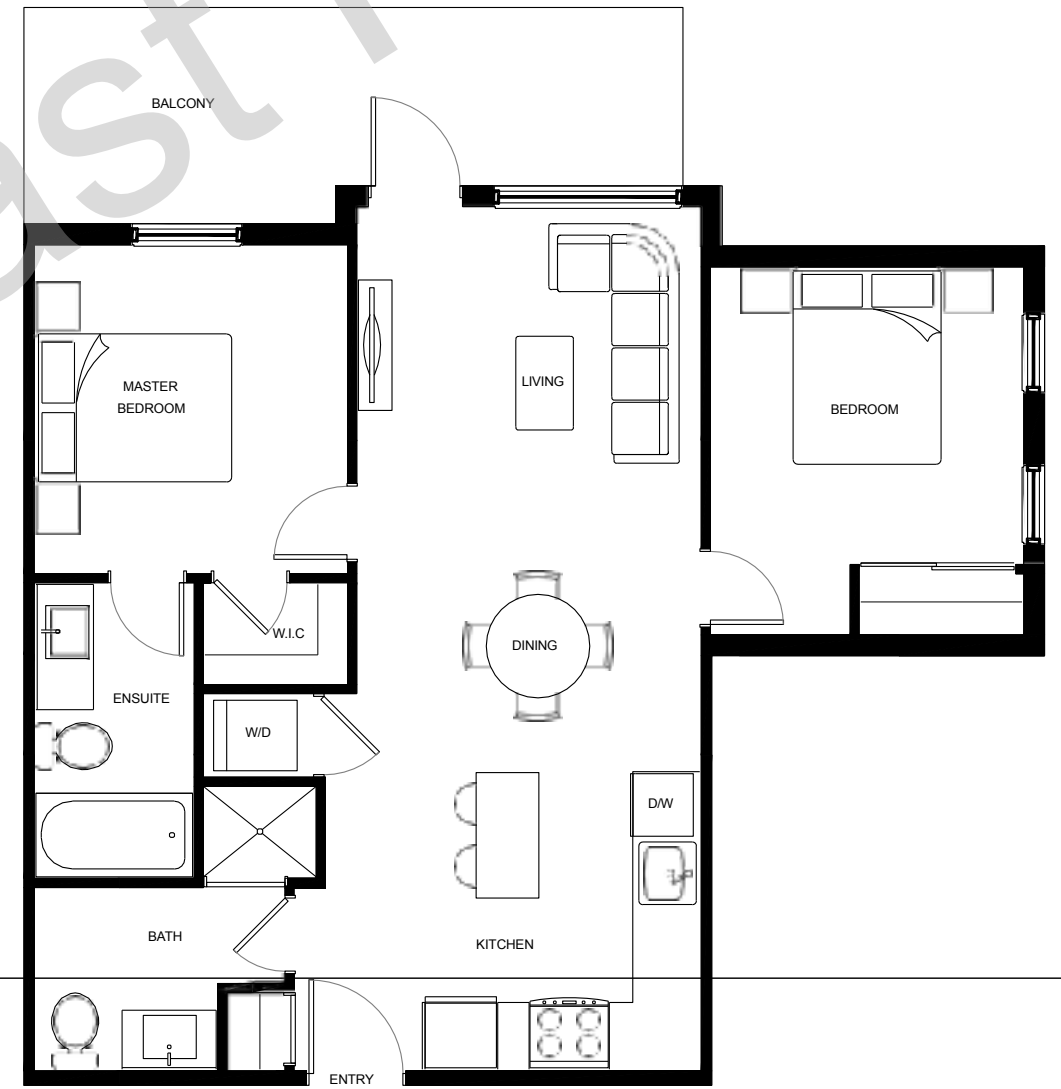
PLAN C1

2 BED 2 BATH
INTERIOR: 752 SF
EXTERIOR: 220 - 340 SF



PLAN C2 / C2A / C6

2 BED 2 BATH
INTERIOR: 743 SF
EXTERIOR: 99 - 228 SF



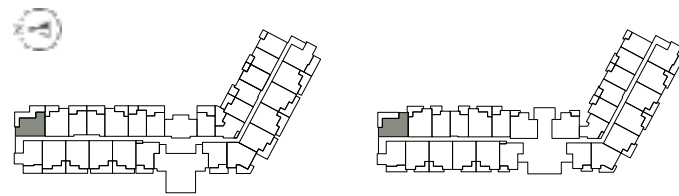
LEGEND

C2

C2A

C6

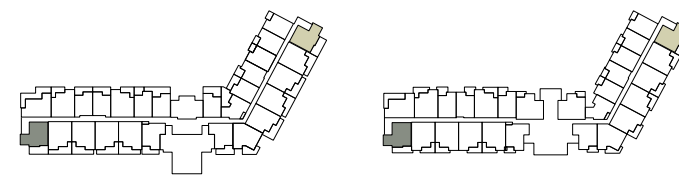
Cardinal



MAIN FLOOR

FLOOR 2-4

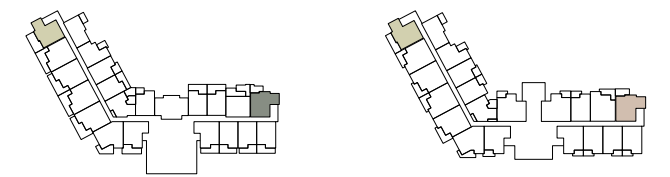
Cardinal



MAIN FLOOR

FLOOR 2-4

Heron

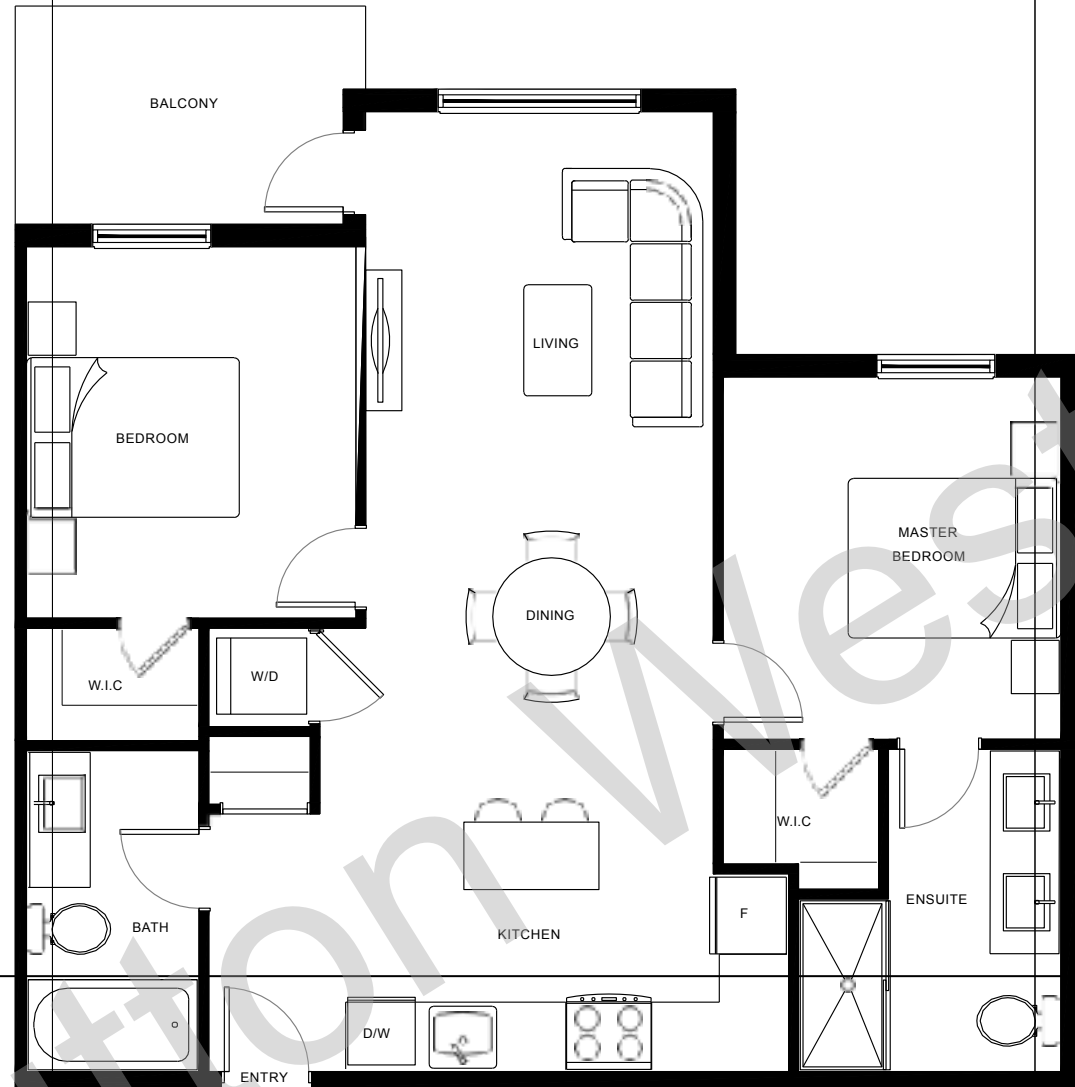


MAIN FLOOR

FLOOR 2-4

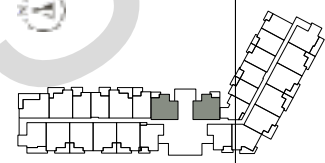
PLAN C3

2 BED 2 BATH
INTERIOR: 794 SF
EXTERIOR: 69 - 75 SF

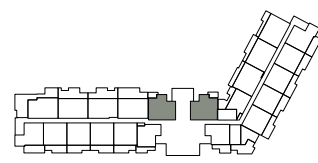


Cardinal

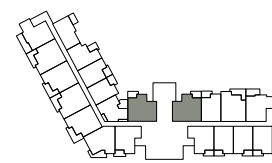
Heron



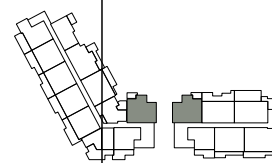
FLOOR 2-4



PENTHOUSE



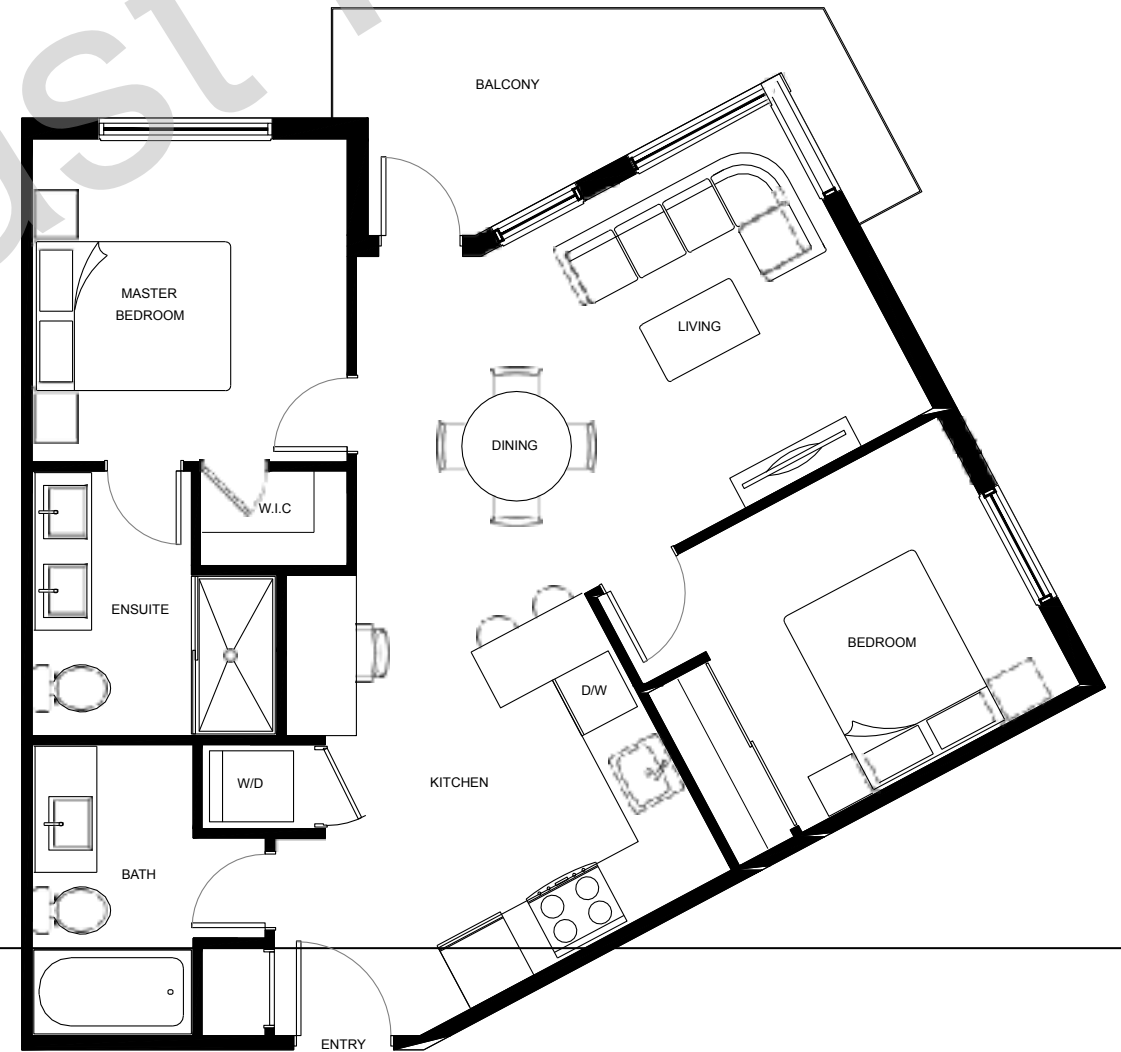
FLOOR 2-4



PENTHOUSE

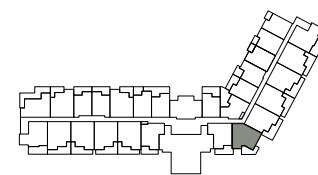
PLAN C4

2 BED 2 BATH
INTERIOR: 774 SF
EXTERIOR: 96 - 142 SF

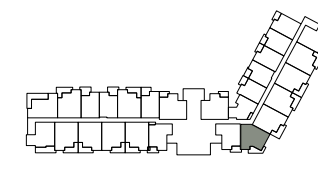


Cardinal

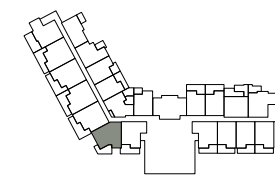
Heron



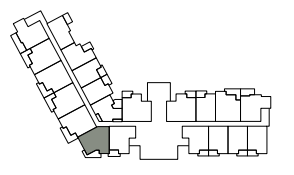
MAIN FLOOR



FLOOR 2-4



MAIN FLOOR



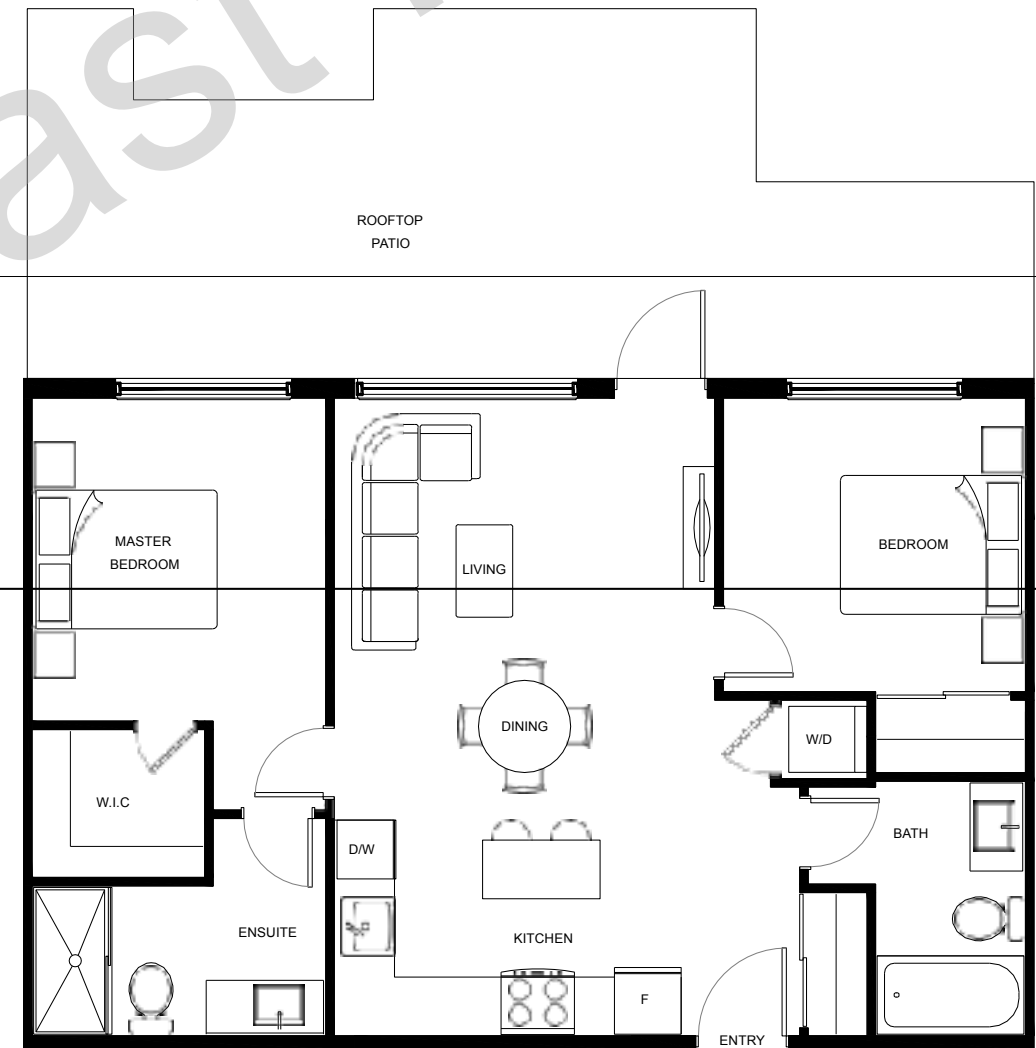
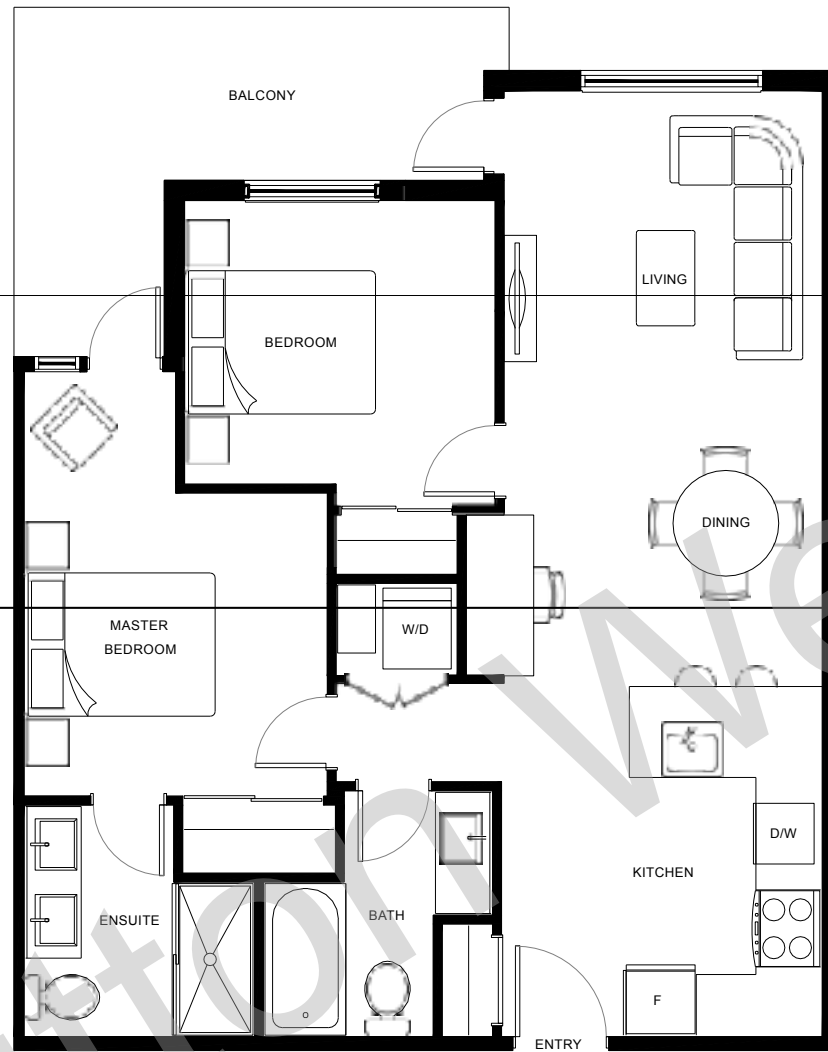
FLOOR 2-4

PLAN D

2 BED 2 BATH
INTERIOR: 777 SF
EXTERIOR: 130 - 257 SF

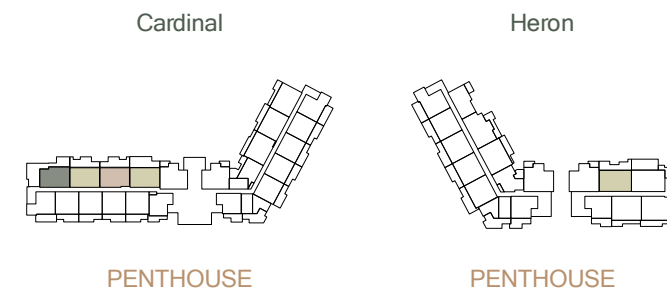
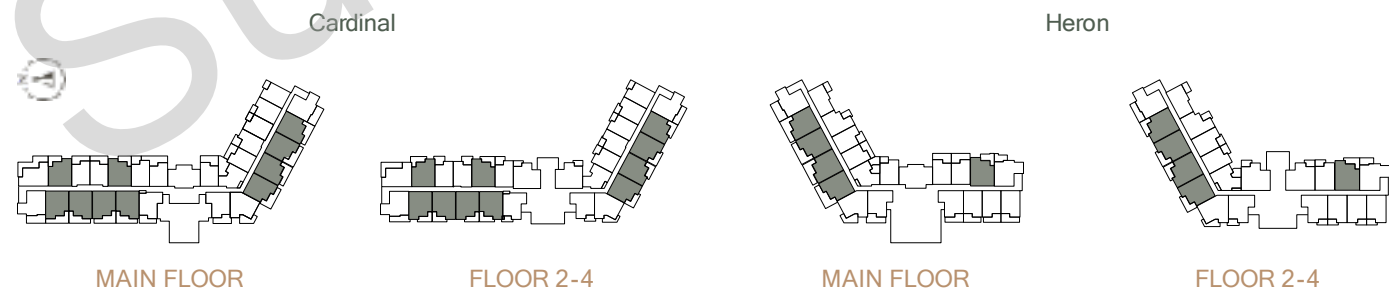
PLAN F / F1 / F2

2 BED 2 BATH
INTERIOR: 773 - 784 SF
EXTERIOR: 295 - 674 SF



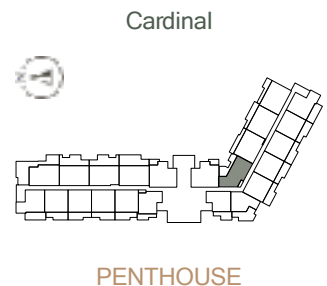
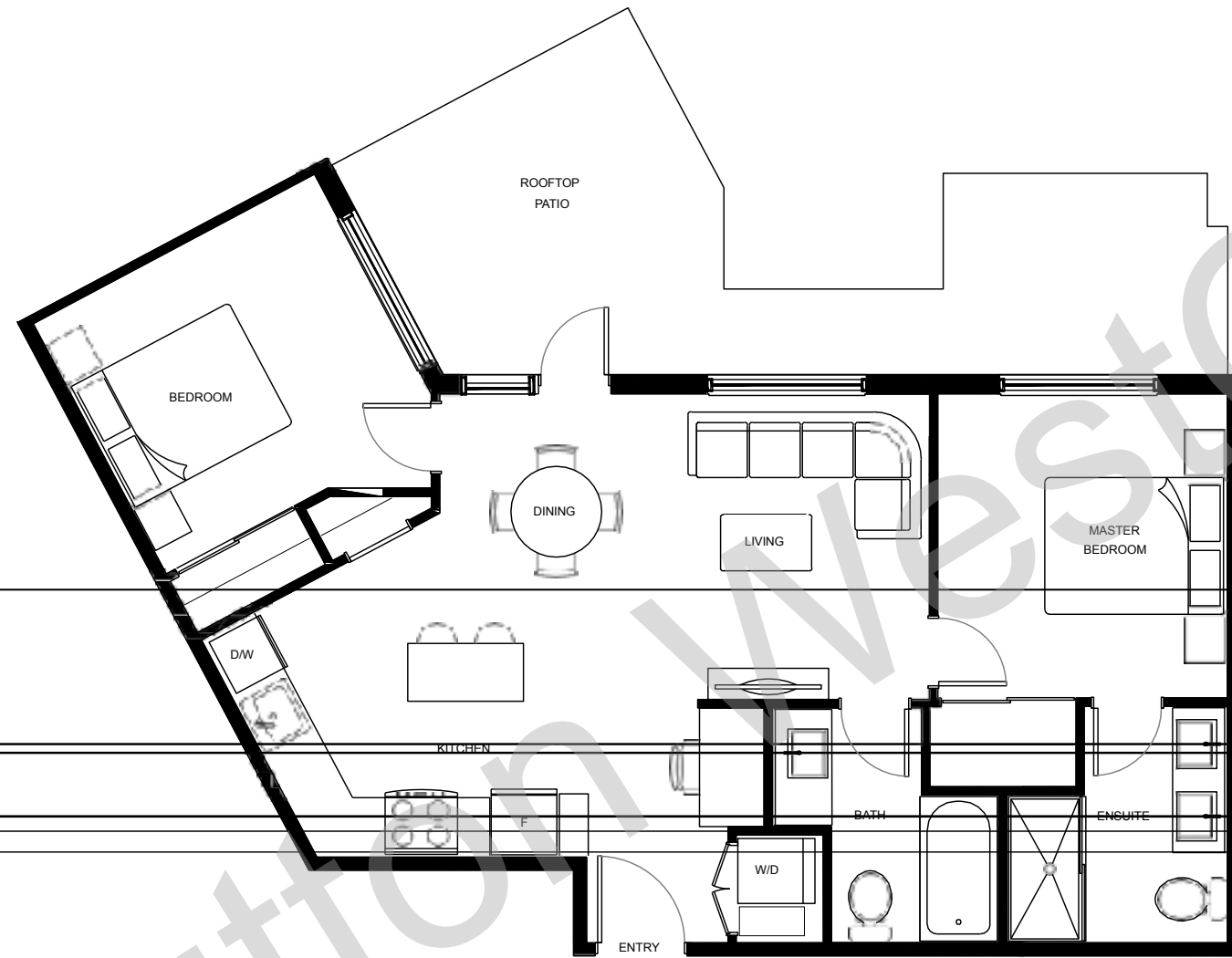
LEGEND

- F
- F1
- F2



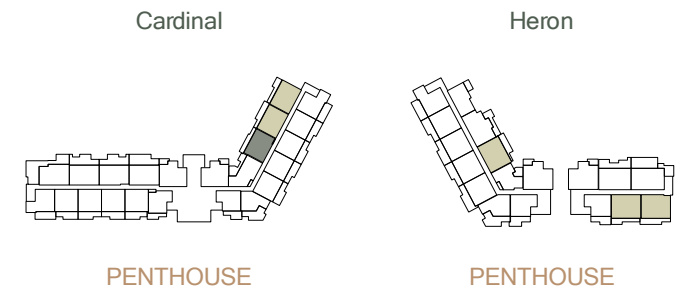
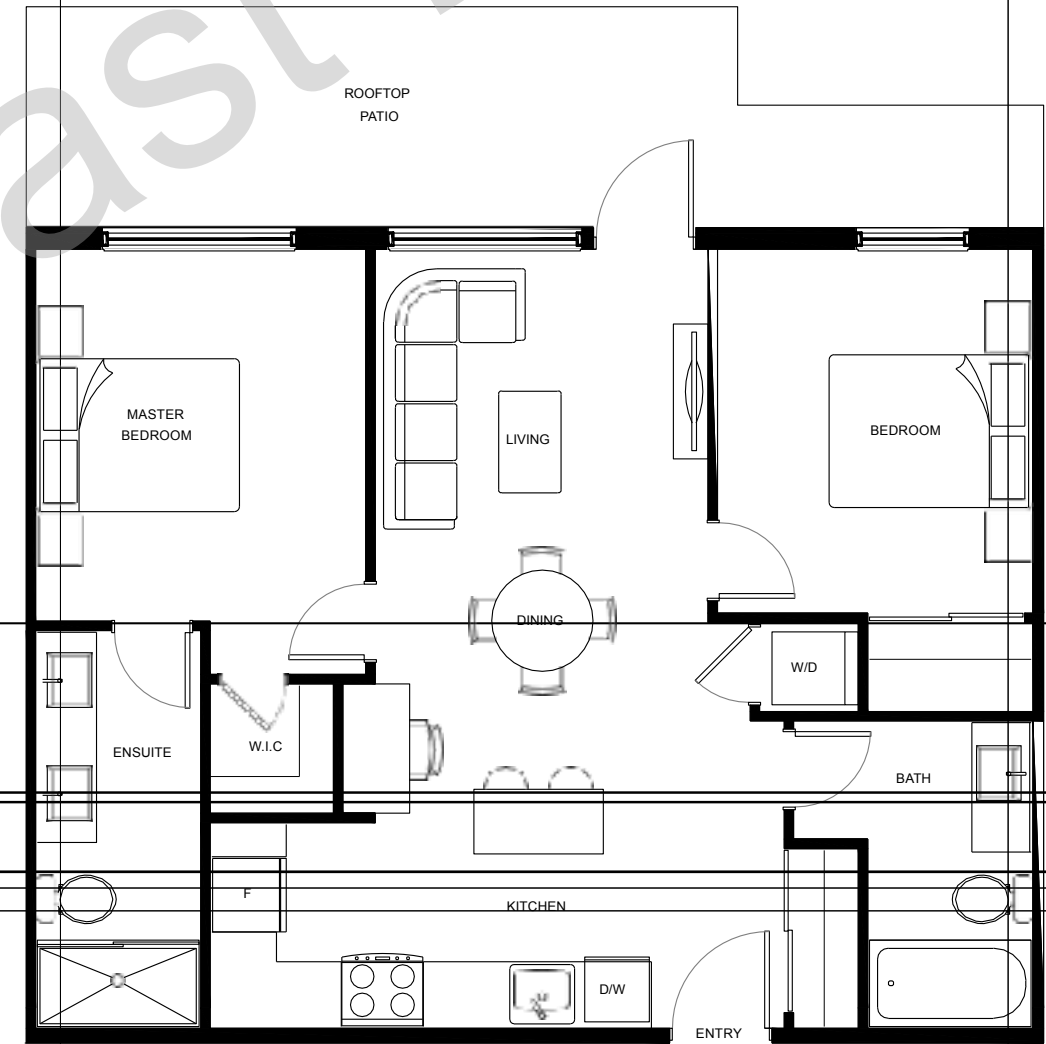
PLAN F8

2 BED 2 BATH
INTERIOR: 753 SF
EXTERIOR: 195 SF



PLAN F9 / F10

2 BED 2 BATH
INTERIOR: 788 SF
EXTERIOR: 145 - 187 SF



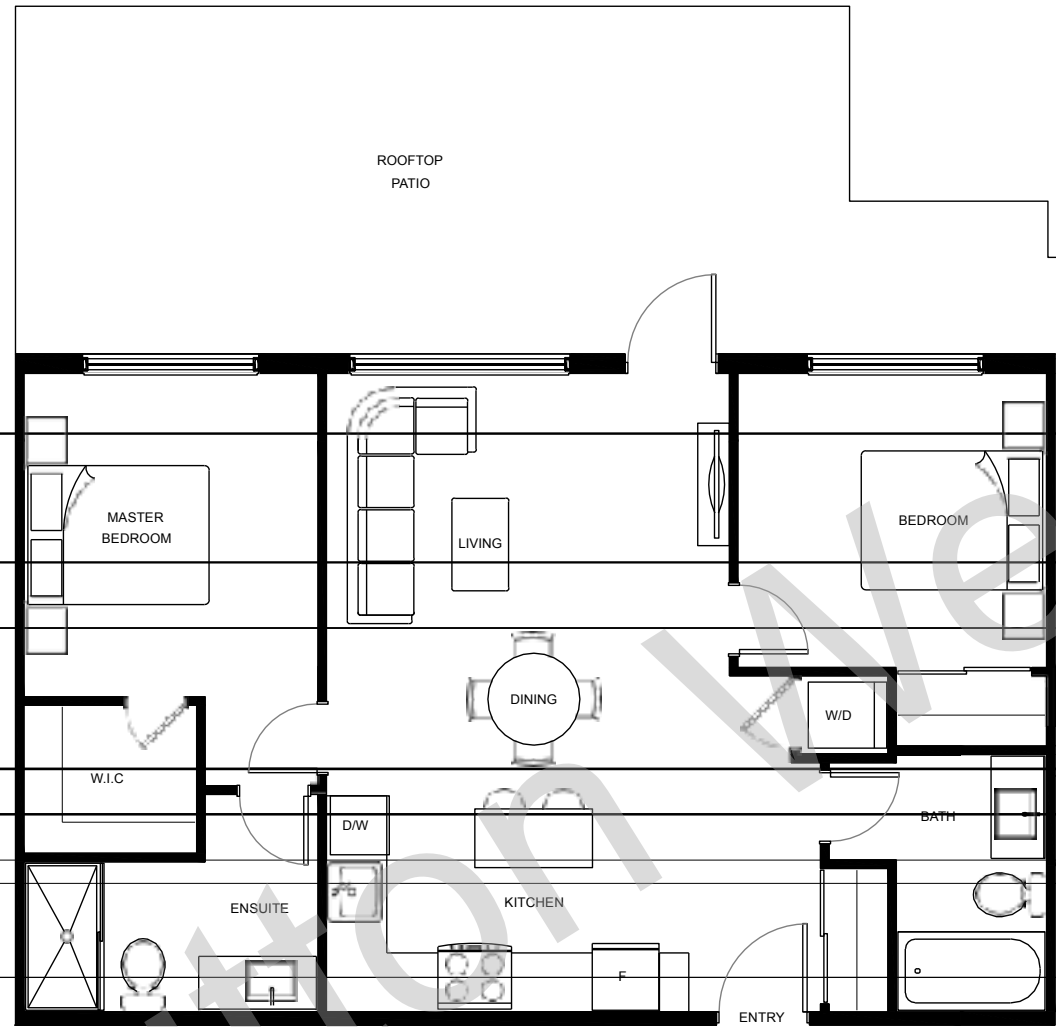
LEGEND

F9

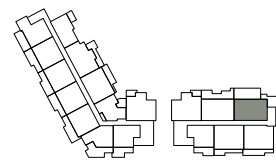
F10

PLAN **F11**

2 BED 2 BATH
INTERIOR: 804 SF
EXTERIOR: 480 SF



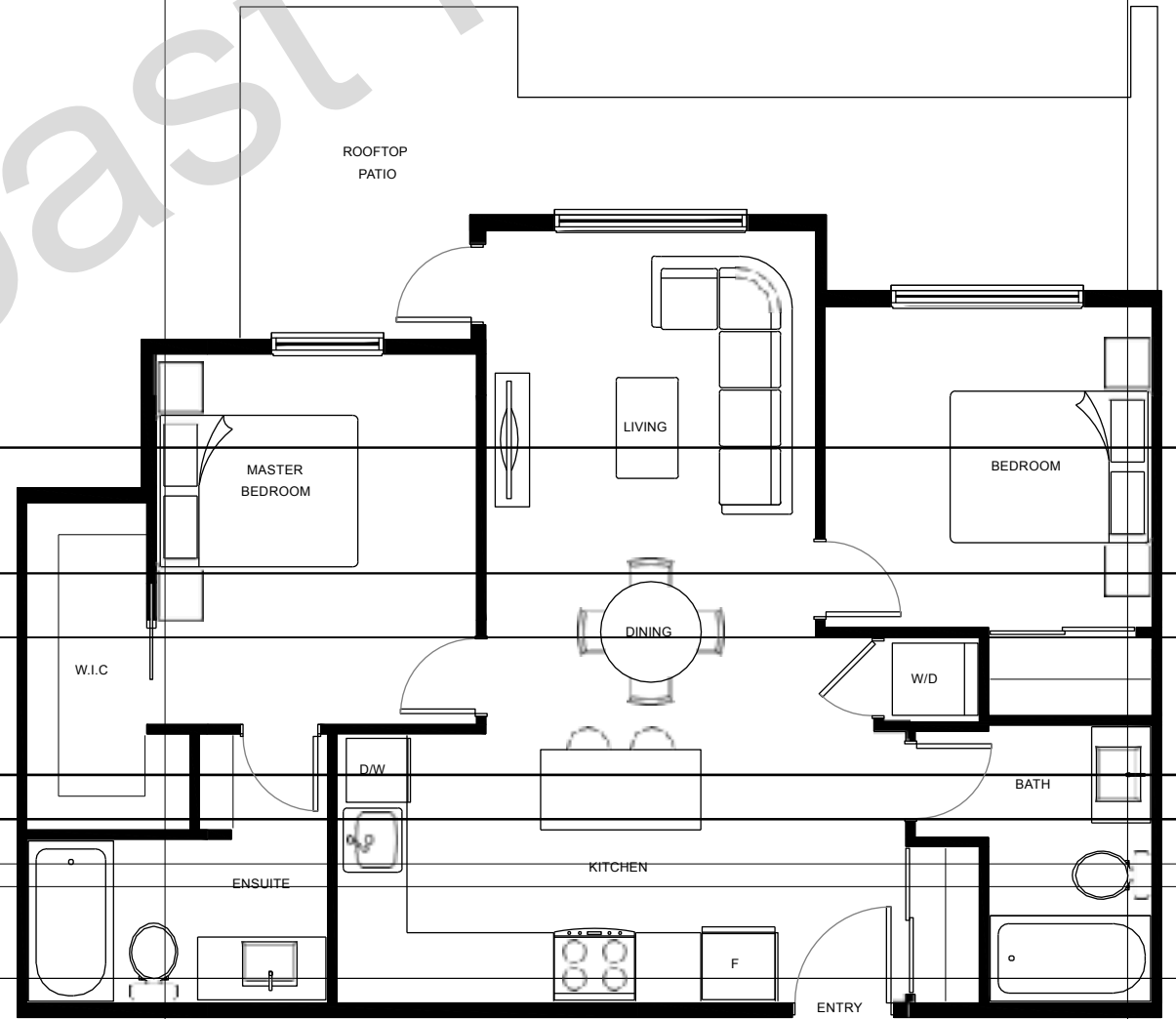
Heron



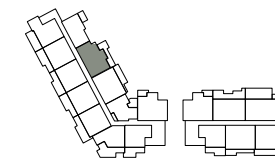
PENTHOUSE

PLAN **F12**

2 BED 2 BATH
INTERIOR: 798 SF
EXTERIOR: 176 SF



Heron



PENTHOUSE