

# FEATURES

## Vibrant Urban Living

- 384 1 to 3-bedroom tower homes (including lockoff suites) and 3-bedroom townhomes featuring high design and quality construction by established local developer Townline
- Striking architecture by Boniface Oleksiuk Politano Architects features contrasting bands of black and white to create an iconic form
- 3 high-speed elevators for quick access to your home and a host of resort-inspired amenities
- Proximity to Burquitlam Station and the array of urban amenities offered by the vibrant West Coquitlam neighbourhood
- Double height lobby with fireplace lounge, signature lighting installation, and inviting terrazzo and wood accents
- EV ready charging network capabilities in all resident parking stalls

## Resort-Inspired Amenities

Over 27,000 square feet of indoor and outdoor amenities

### PODIUM AMENITIES

- Full-Service Concierge to assist with:
  - Booking amenity spaces and guest suites
  - Receiving & storing deliveries
  - Providing enhanced on-site security
- Co-working space
- Music, karaoke and games lounge
- Fitness studio with cardio, strength, and stretch areas and water filling station
- Change rooms
- Outdoor pool with covered cabanas
- Picnic and outdoor games area with garden plots
- Fenced dog run
- Dog wash area on Level 1
- Fully-furnished guest suites with mini-fridge and full bath
- Laundry Lounge

- Automated parcel delivery storage
- Cold/dry storage for grocery and floral deliveries

### PENTHOUSE AMENITIES

- Full chef's kitchen and dining area with long table and ample seating
- Open games lounge with billiards, foosball, fireplace, and bar
- Dramatic double height Lantern Lounge featuring soaring windows and signature lighting, perfect for savouring views from the 45th floor
- Expansive terrace that offers breathtaking outlooks of Burnaby Mountain, The Fraser River, and beyond. Featuring:
  - Outdoor dining area with two communal BBQs and long harvest tables
  - Lounge seating
  - Firepits and a variety of social seating areas perfect for fostering connection with friends and neighbours

## Designer Interiors

- Designed by award-winning Insight Design Group
- Choice of two designer colour palettes featuring sleek, contrasting tones and clean lines
- Wide-plank laminate flooring throughout living and bedrooms
- Hand set porcelain tile in bathrooms and laundry closet
- Cooling system in all homes ensure year-round comfort
- Wood shelves and chrome rods in all closets
- Contemporary roller blinds for control of natural light and UV protection
- Samsung ventless front-loading washer and dryer
- Expansive windows and over-height ceilings
- Stone entry threshold and solid core entry door creates an enhanced sense of arrival
- Signature wood finish entry niche with USB charging/power outlet

## Designer Kitchens

- Stainless-steel appliance package:
  - Integrated Fulgor Milano refrigerator with bottom freezer (24" in 1-bedroom homes, 30" in 2 bedroom +)
  - Bosch gas cooktop (24" four-burner in 1-bedroom homes, 30" five-burner in 2 bedroom +)
  - AEG slide-out hood fan (24" in 1-bedroom homes, 30" in 2 bedroom +)
  - Bosch electric wall oven (24" in 1-bedroom homes, 30" in 2 bedroom +)
  - Integrated Fulgor 24" dishwasher
  - Panasonic built-in microwave with trim kit
- Sleek matte black hardware and plumbing fixtures
- Laminate cabinets with white lowers and contrasting wood uppers
- Under-cabinet LED strip lighting provides optimal illumination for cooking and meal prepping
- Quartz countertops with contrasting porcelain slab backsplash
- Stainless-steel under-mount sink with statement matte black faucet
- Recessed LED pot lights in ceiling

## Bathrooms

- Soft-close cabinetry and drawers
- Custom millwork cabinet offers additional storage beside vanity mirror
- Quartz countertops
- Modern under-mount sinks with sleek single handle, matte black faucet
- Porcelain tiles on vanity wall, feature wall and floors
- Contemporary deep soaker tub
- Matte black plumbing fixtures
- Matte black shower and tub niche (ensuite/main bath only)
- Quiet-close, dual-flush toilet

## A Focus on How You Live

- Meticulously planned layouts allow you to cater your home to your lifestyle
- Oversized patios and balconies for a perfect blend of indoor and outdoor living
- Thoughtful Townline touches, including signature entry niche and easy-access water shutoff for the washer/dryer, put livability and ease of ownership at the forefront

## Security & Technology

- USB charging port in kitchen
- Convenient, multi-function media ports for telephone, data and cable
- Motion sensors on parkade lights for energy and cost efficiency
- Zerv smart access system at Lobby entry for visitor pre-screening
- Personally encoded entry system to access lobby, elevator, underground parkade, common areas and suite-specific floor only
- Secure residential underground parking
- Well-lit outdoor common areas and pedestrian walkways
- Complimentary TELUS Optik TV & Internet for 1 year

## Peace of Mind

- Comprehensive warranty protection by Travelers Guarantee Company of Canada providing coverage for:
  - 2 year material warranty
  - 5 year building envelope warranty
  - 10 year structural defects warranty
- Dedicated support from Townline's renowned customer care team

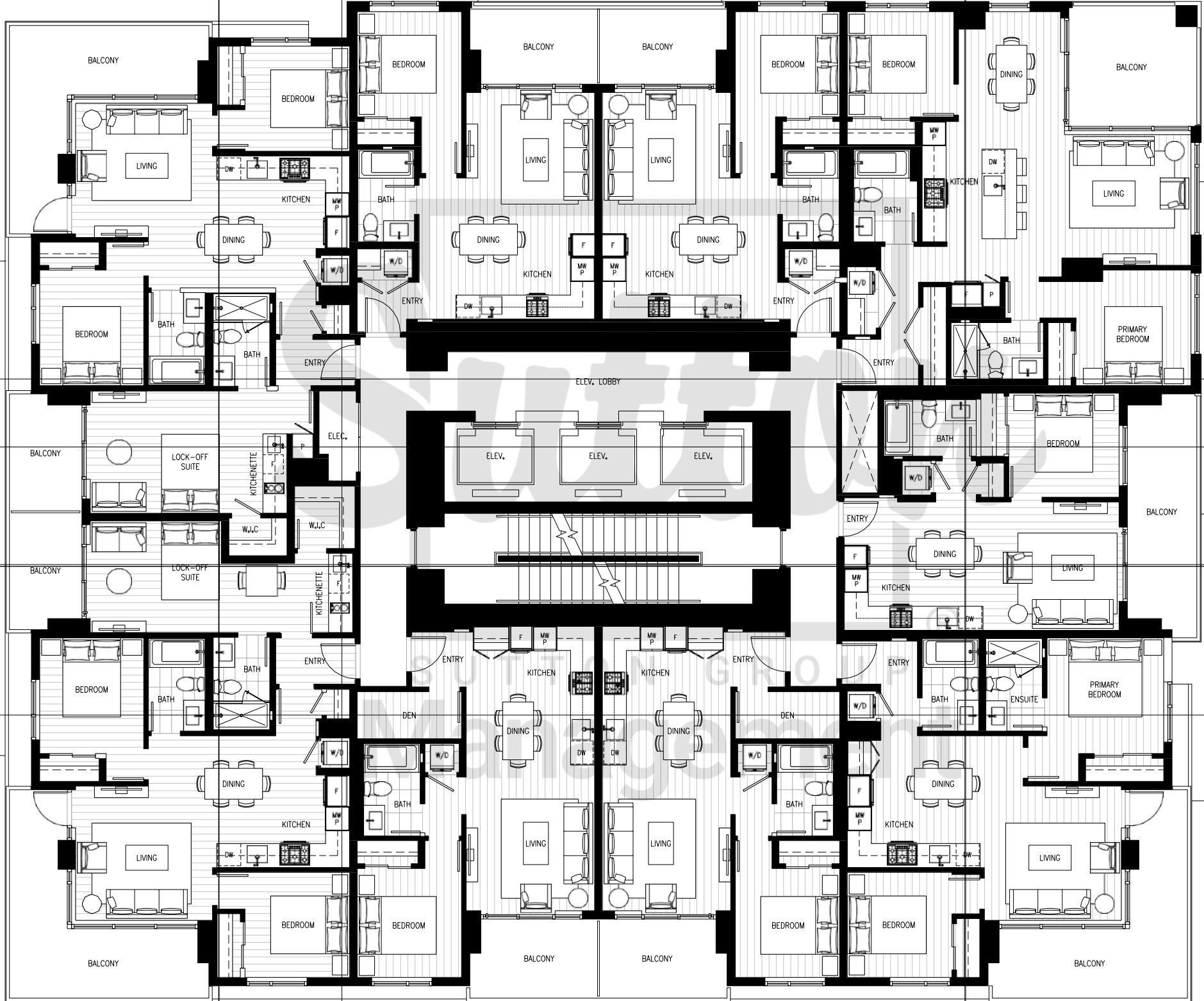
Townline.com

Sales and Marketing by Townline Marketing Inc. The developer reserves the right to make changes, modifications or substitutions to the building design, specifications and floor plans should they be necessary. Final floor plans may be a mirror image of the floor plans shown. Balcony/patio sizes vary floor to floor. Interior square footage and room sizes are based on preliminary survey measurements. Sizes are approximate and actual square footage may vary from the final survey and architectural drawings. This is not an offering for sale. Any such offering can only be made by way of disclosure statement. E. & O.E.

# LEVEL 4-17

**PLAN A3**  
1 Bed, 1 Bath  
Interior: 526-534 Sq Ft  
Exterior: 78 Sq Ft

**PLAN A3**  
1 Bed, 1 Bath  
Interior: 526-534 Sq Ft  
Exterior: 78 Sq Ft



**PLAN C2**  
2 Bed, 1 Bath + Lock-off Suite  
Interior: 981 Sq Ft  
Exterior: 199-227 Sq Ft

**PLAN B2**  
2 Bed, 2 Bath  
Interior: 921 Sq Ft  
Exterior: 119 Sq Ft

**PLAN A2B**  
1 Bed, 1 Bath  
Interior: 498 Sq Ft  
Exterior: 128 Sq Ft

**PLAN C1**  
2 Bed, 1 Bath + Lock-off Suite  
Interior: 980 Sq Ft  
Exterior: 213-227 Sq Ft

**PLAN B1C**  
2 Bed, 2 Bath  
Interior: 746 Sq Ft  
Exterior: 156-164 Sq Ft

**PLAN A1**  
1 Bed + Den, 1 Bath  
Interior: 582 Sq Ft  
Exterior: 76 Sq Ft

**PLAN A1**  
1 Bed + Den, 1 Bath  
Interior: 582 Sq Ft  
Exterior: 76 Sq Ft



# LEVEL 18-20

## PLAN A3

1 Bed, 1 Bath  
Interior: 526-534 Sq Ft  
Exterior: 78 Sq Ft

## PLAN A3

1 Bed, 1 Bath  
Interior: 526-534 Sq Ft  
Exterior: 78 Sq Ft

## PLAN B2

2 Bed, 2 Bath  
Interior: 921 Sq Ft  
Exterior: 119 Sq Ft

## PLAN C4A & C4B

3 Bed, 2 Bath  
Interior: 917 Sq Ft  
Exterior: 203-536 Sq Ft

## PLAN A2B

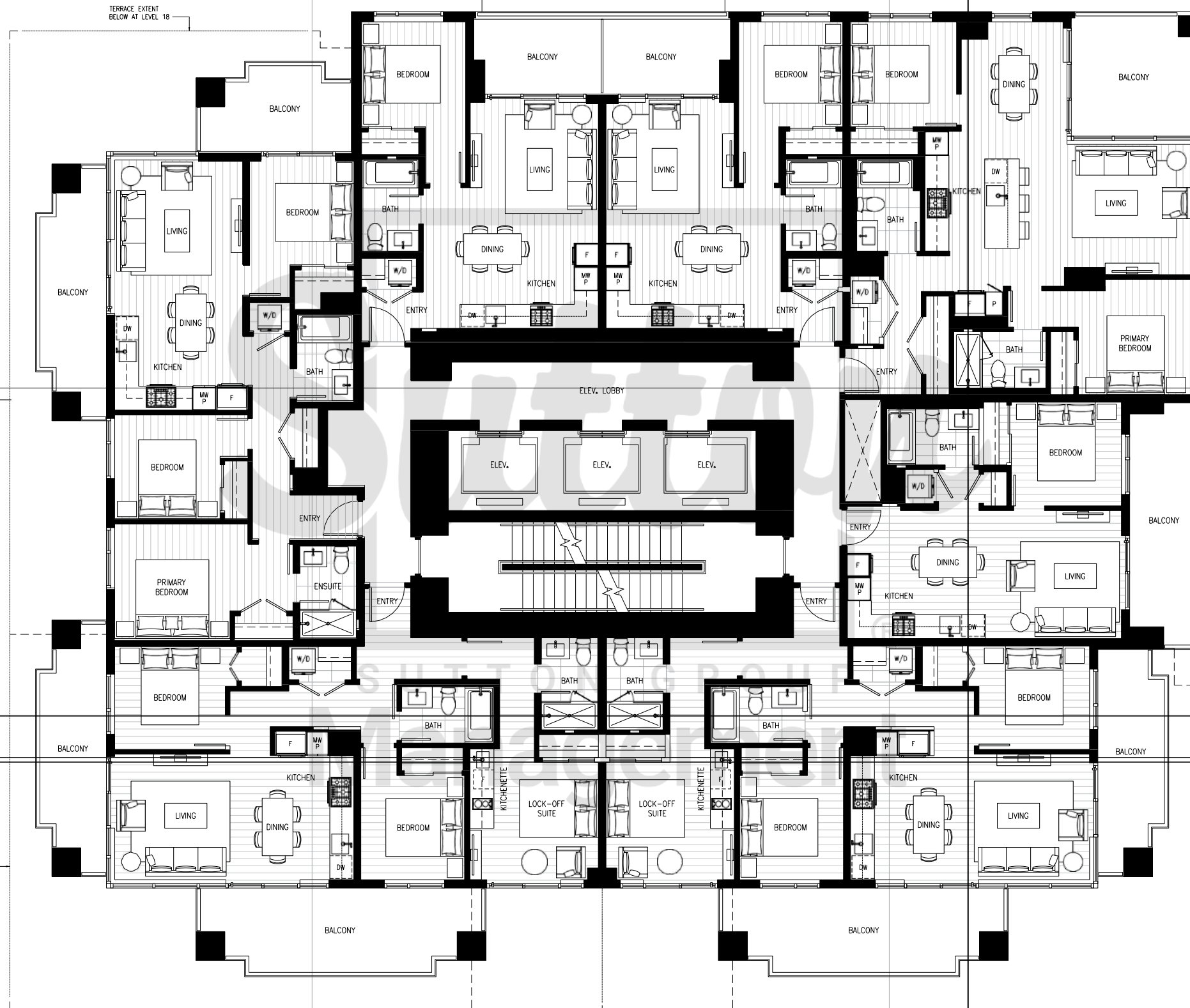
1 Bed, 1 Bath  
Interior: 498 Sq Ft  
Exterior: 128 Sq Ft

## PLAN C5B & C5D

2 Bed, 1 Bath + Lock-off Suite  
Interior: 964 Sq Ft  
Exterior: 285-605 Sq Ft

## PLAN C5A & C5C

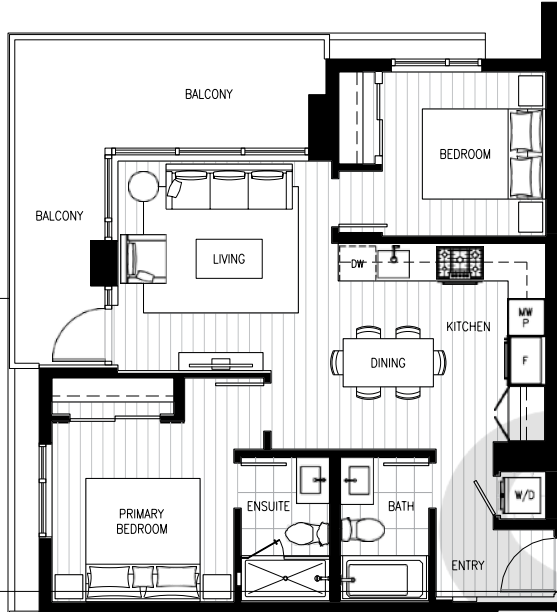
2 Bed, 1 Bath + Lock-off Suite  
Interior: 964 Sq Ft  
Exterior: 274-588 Sq Ft



# LEVEL 21-41

**PLAN B1B**

2 Bed, 2 Bath  
Interior: 747 Sq Ft  
Exterior: 164 Sq Ft



**PLAN A3**

1 Bed, 1 Bath  
Interior: 526-534 Sq Ft  
Exterior: 78 Sq Ft



**PLAN A3**

1 Bed, 1 Bath  
Interior: 526-534 Sq Ft  
Exterior: 78 Sq Ft



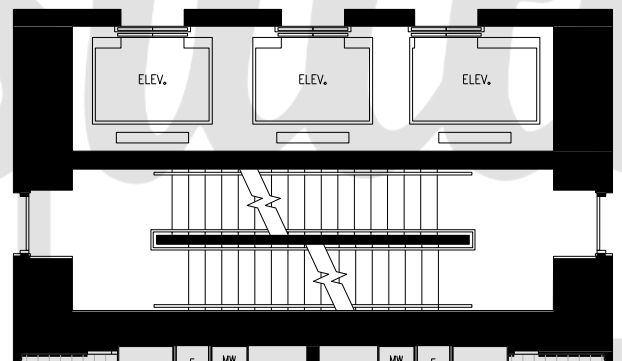
**PLAN B2**

2 Bed, 2 Bath  
Interior: 921 Sq Ft  
Exterior: 119 Sq Ft



**PLAN A2A**

1 Bed, 1 Bath  
Interior: 504 Sq Ft  
Exterior: 105 Sq Ft



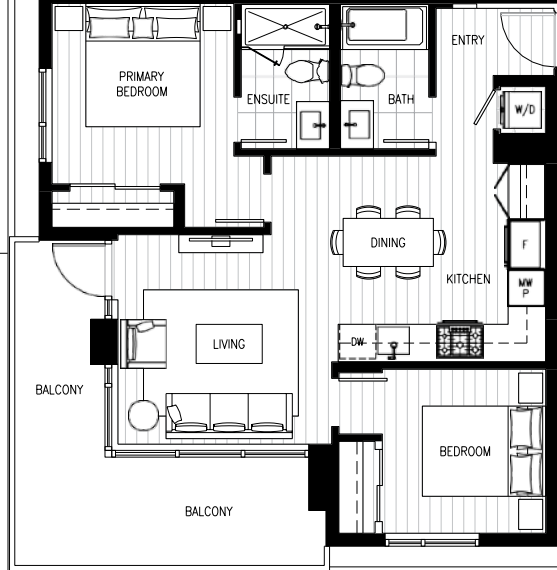
**PLAN A2B**

1 Bed, 1 Bath  
Interior: 498 Sq Ft  
Exterior: 128 Sq Ft



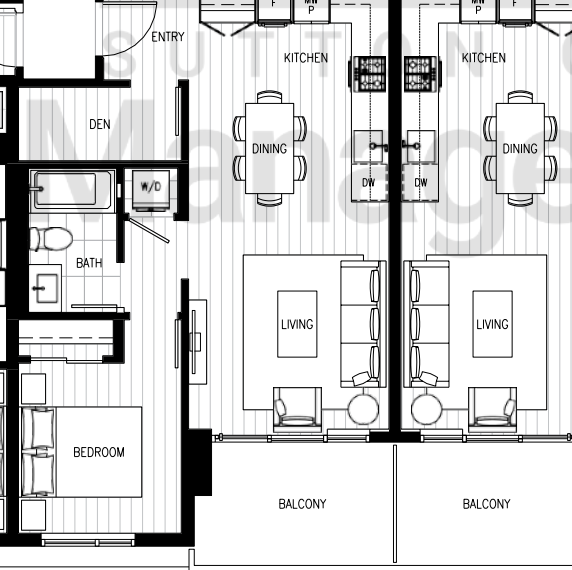
**PLAN B1A**

2 Bed, 2 Bath  
Interior: 746 Sq Ft  
Exterior: 164 Sq Ft



**PLAN A1**

1 Bed + Den, 1 Bath  
Interior: 582 Sq Ft  
Exterior: 76 Sq Ft



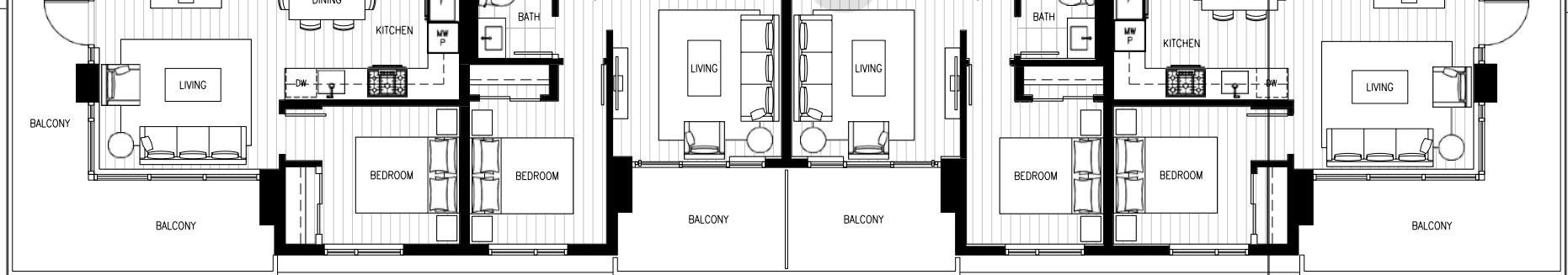
**PLAN A1**

1 Bed + Den, 1 Bath  
Interior: 582 Sq Ft  
Exterior: 76 Sq Ft



**PLAN B1C**

2 Bed, 2 Bath  
Interior: 746 Sq Ft  
Exterior: 156-164 Sq Ft



# LEVEL 42-44

## PLAN A3

1 Bed, 1 Bath  
Interior: 526-534 Sq Ft  
Exterior: 78 Sq Ft

## PLAN A3

1 Bed, 1 Bath  
Interior: 526-534 Sq Ft  
Exterior: 78 Sq Ft

## PLAN B2

2 Bed, 2 Bath  
Interior: 921 Sq Ft  
Exterior: 119 Sq Ft

## PLAN C4A & C4B

3 Bed, 2 Bath  
Interior: 917 Sq Ft  
Exterior: 203-536 Sq Ft

## PLAN A2B

1 Bed, 1 Bath  
Interior: 498 Sq Ft  
Exterior: 128 Sq Ft

## PLAN C3B & C3D

3 Bed, 2 Bath  
Interior: 964 Sq Ft  
Exterior: 285-605 Sq Ft

## PLAN C3A & C3C

3 Bed, 2 Bath  
Interior: 964 Sq Ft  
Exterior: 274-588 Sq Ft

